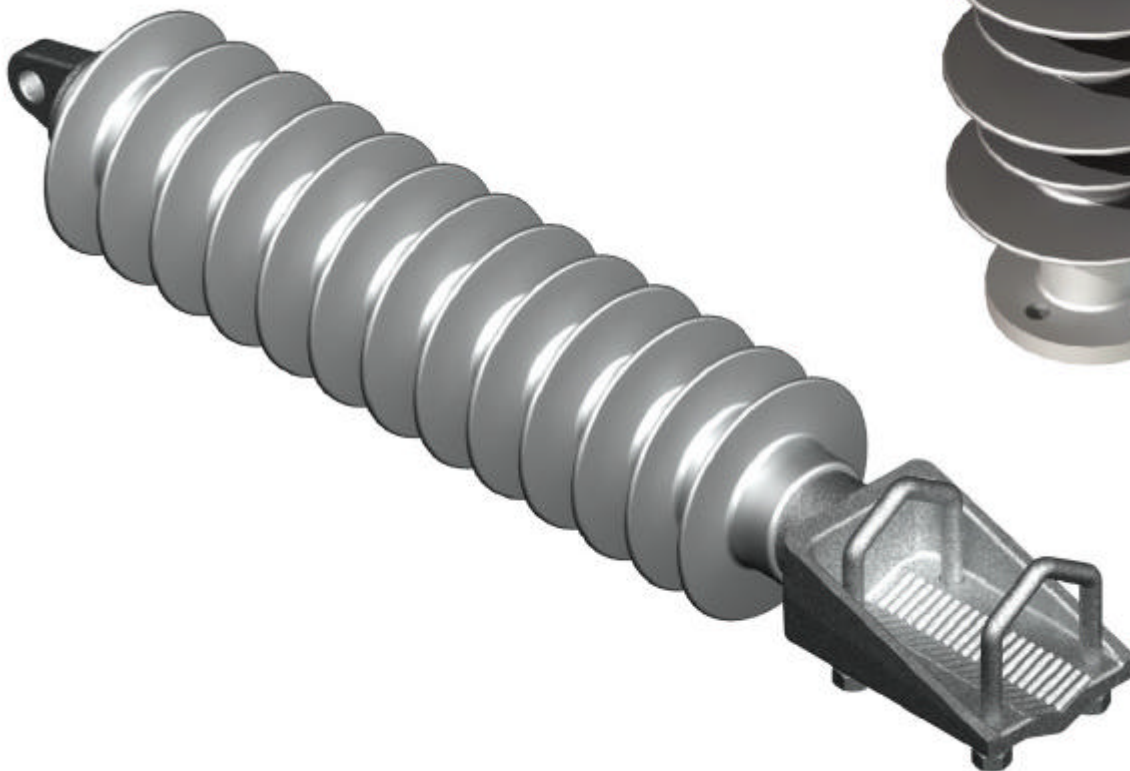
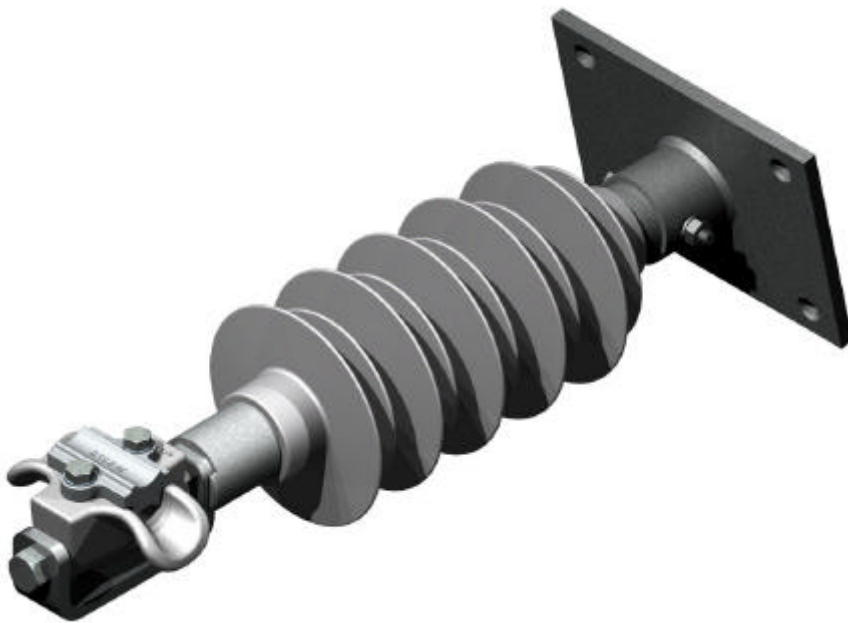


Railway Insulators

PFISTERER
THE POWER CONNECTION

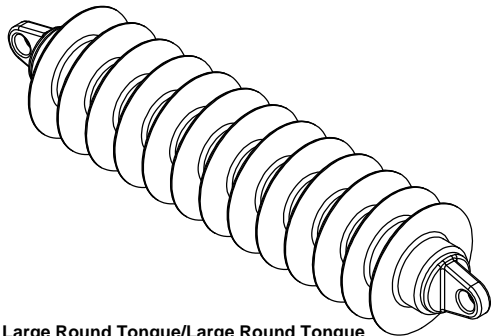


CABLE SYSTEMS | COMPONENTS | **OVERHEAD LINES** | RAILWAY CATENARY SYSTEMS

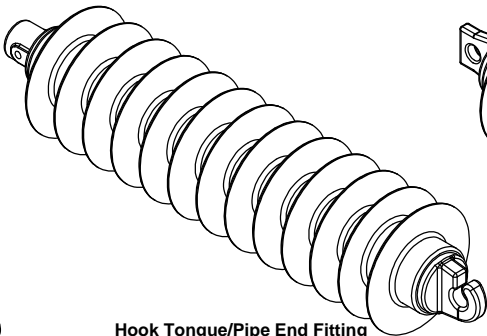
www.pfisterer.co.za | info@pfisterer.co.za

25kV AC Local

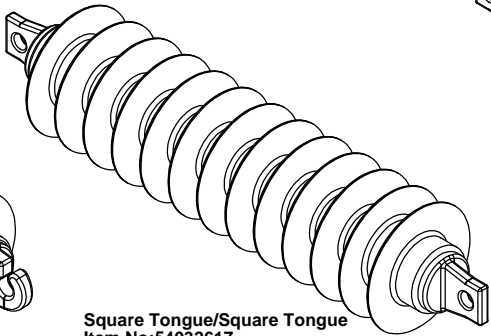
This drawing and its contents are confidential and exclusive property of PFISTERER (PTY) LTD. No publications, copies or distribution may be made without written consent by PFISTERER (PTY) LTD.



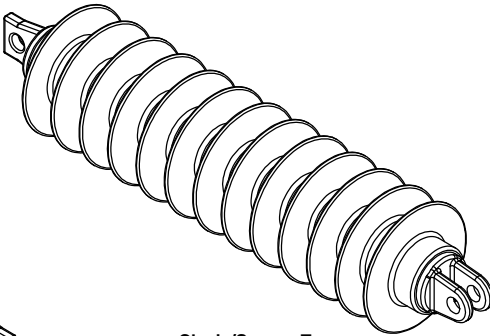
Large Round Tongue/Large Round Tongue
Item No:54033393



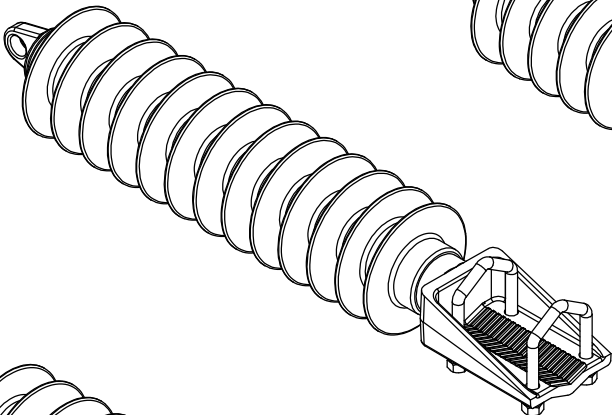
Hook Tongue/Pipe End Fitting
Item No:54033408



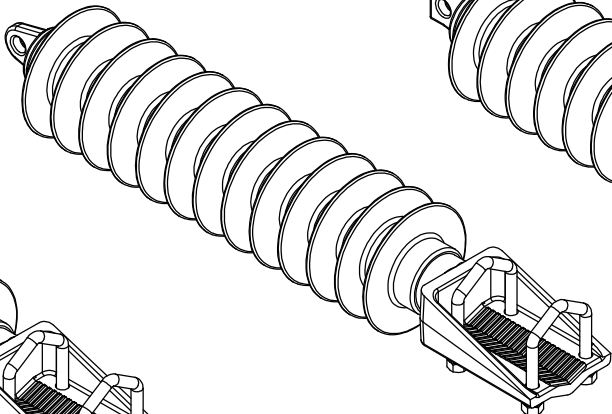
Square Tongue/Square Tongue
Item No:54032617



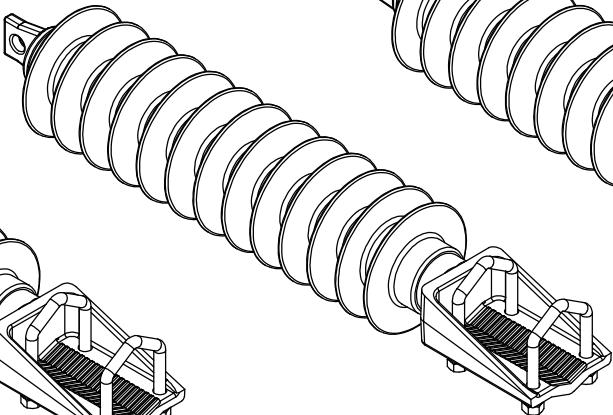
Clevis/Square Tongue
Item No:54032541



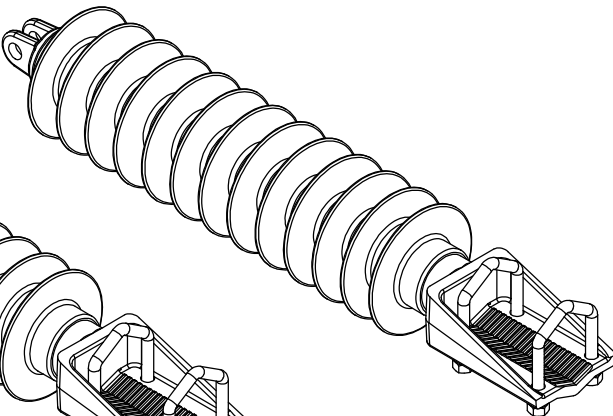
Large Round Tongue/Spade Fitting
Item No:54033381



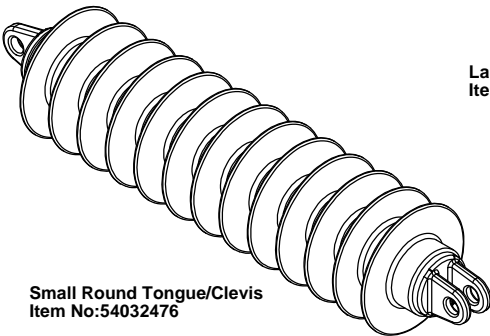
Small Round Tongue/Spade Fitting
Item No:54032516




Square Tongue/Spade Fitting
Item No:54032528



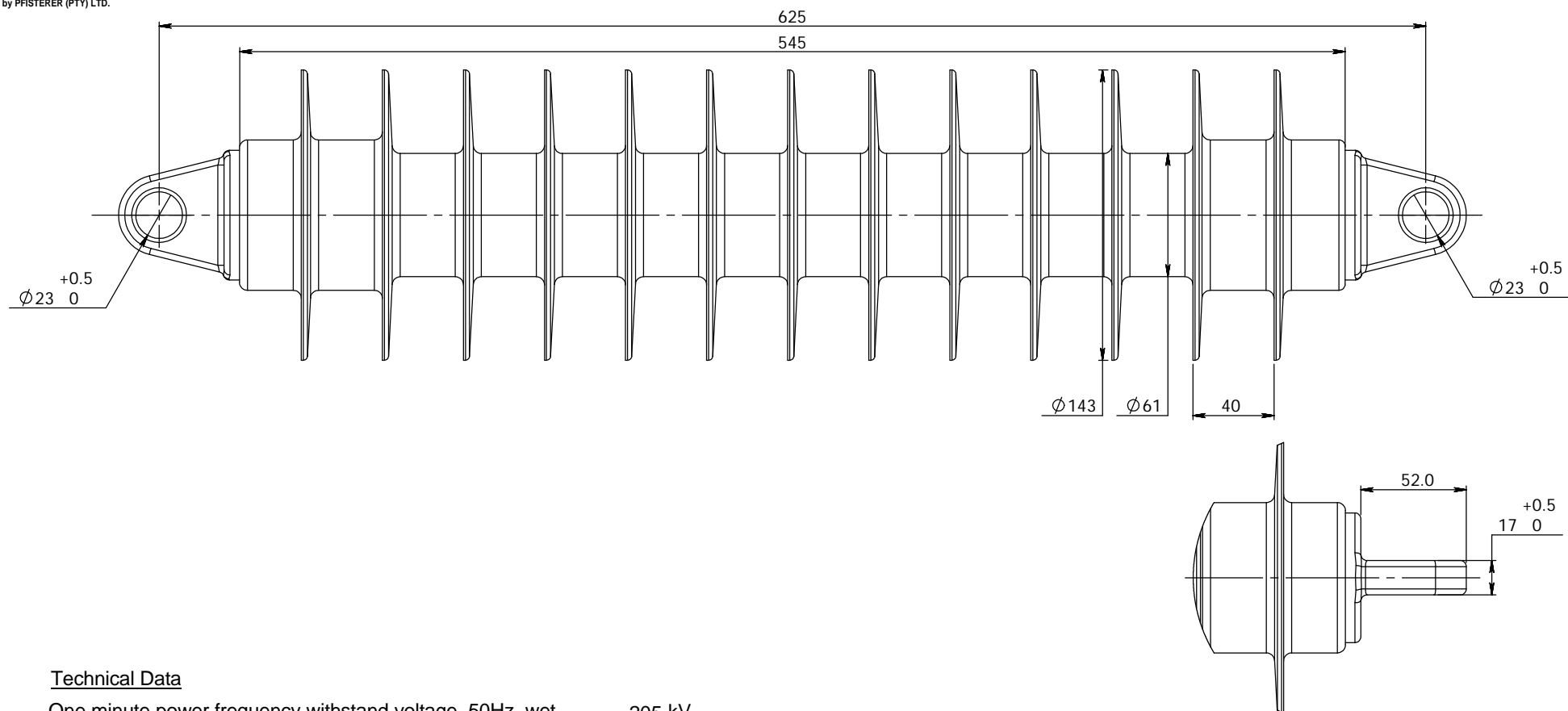
Clevis/Spade Fitting
Item No:54032553



Small Round Tongue/Clevis
Item No:54032476

Description Stand - Off Insulator Assembly 25kV AC, Variations	Unspecified Tolerances		Weight		Substitute for	
	0, ±1 0,0 ±0.25 0,00 ±0.1 Angles ±1°		kg			
			Drawn By		11.06 ALJ	
			Checked By			
			Approved By			
						
PFISTERER (PTY) LTD	Material				Revision	
	Scale		Drawing/Part Number			
	N.T.S.		Refer To Dwg.			

This drawing and its contents are confidential and exclusive property of PFISTERER (PTY) LTD. No publications, copies or distribution may be made without written consent by PFISTERER (PTY) LTD.



Technical Data

One minute power frequency withstand voltage, 50Hz, wet	=	205 kV
Lightning impulse withstand voltage, 1,2/50, pos.	=	384 kV
Arcing distance	=	580 mm
Minimum creepage distance	=	1476 mm
Specified mechanical load (SML)	=	54 kN
Number of sheds	=	13
Material of fittings	=	Steel, h.d.g.
Weight (approx.)	=	5.7 kg

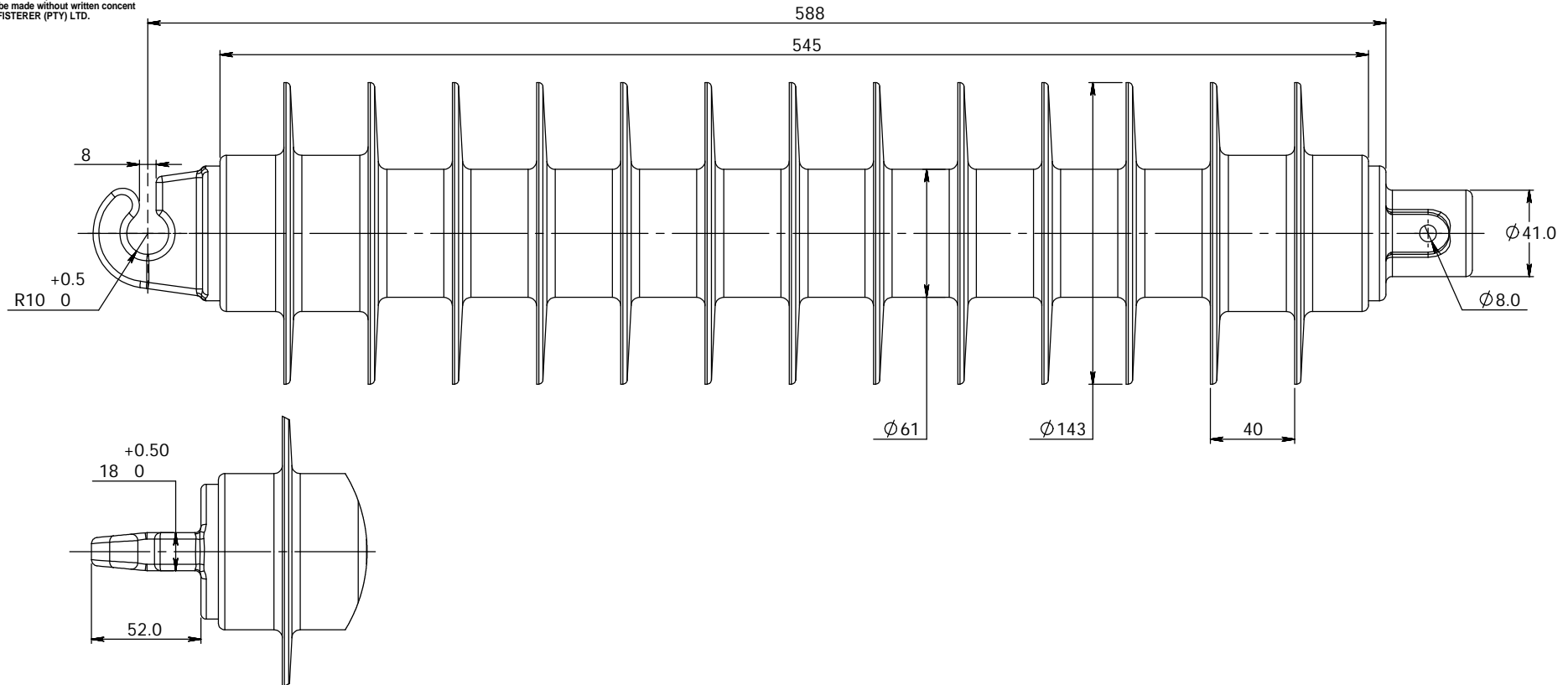
Tongue / Tongue in acc. to Drawing No. Oos London

SML in acc. to IEC 61109

Galvanizing (h.d.g.) acc. to EN ISO 1461

Description	Unspecified Tolerances	Weight		Substitute for	
		kg			
Stand - Off Insulator Assembly 25kV AC, Large tongue/tongue (54033393)	0, ±1	Drawn By	22/05/2007	R.N	
	0,0 ±0.25	Checked By	22/05/2007	ALJ	
	0,00 ±0.1	Approved By			
	Angles ±1°	Material		Revision	000
PFISTERER (PTY) LTD	Scale	Drawing/Part Number			
	N.T.S.	144 034-017			

This drawing and its contents are confidential and exclusive property of PFISTERER (PTY) LTD. No publications, copies or distribution may be made without written consent by PFISTERER (PTY) LTD.



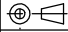
Technical Data

One minute power frequency withstand voltage, 50Hz, wet	=	205 kV
Lightning impulse withstand voltage, 1,2/50, pos.	=	384 kV
Arcing distance	=	580 mm
Minimum creepage distance	=	1476 mm
Specified mechanical load (SML)	=	54 kN
Number of sheds	=	13
Material of fittings	=	Steel, h.d.g.
Weight (approx.)	=	5.7 kg
	=	

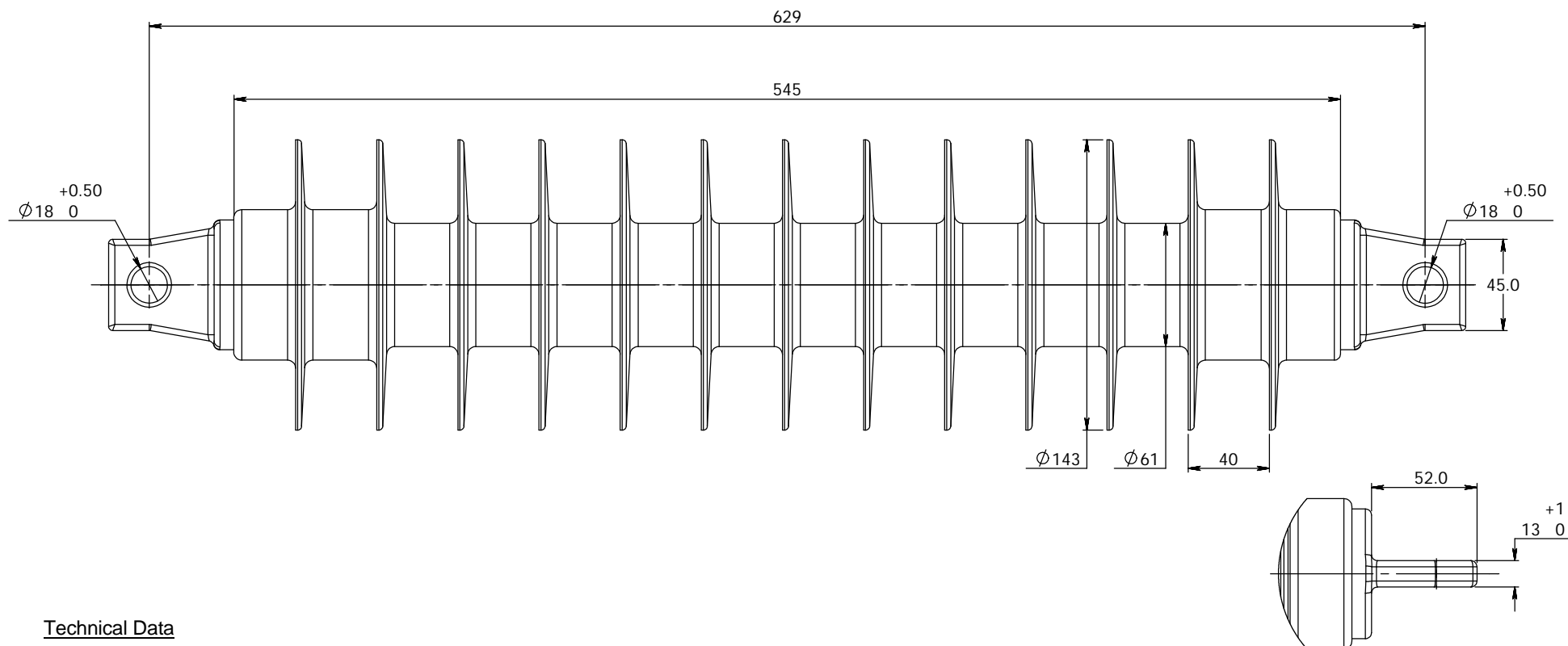
Hook / Pipe End Fitting in acc. to Drawing No. Oos London

SML in acc. to IEC 61109

Galvanizing (h.d.g.) acc. to EN ISO 1461

Description Stand - Off Insulator Assembly 25kV AC, Hook end, Pipe end (54033408)	Unspecified Tolerances 0, ±1 0,0 ±0.25 0,00 ±0.1 Angles ±1°	Weight kg	Substitute for	
		Drawn By	22/05/2007	R.N
		Checked By	22/05/2007	ALJ
		Approved By		
	Material			Revision
PFISTERER (PTY) LTD		Scale N.T.S.	Drawing/Part Number 144 034-019	

This drawing and its contents are confidential and exclusive property of PFISTERER (PTY) LTD. No publications, copies or distribution may be made without written consent by PFISTERER (PTY) LTD.



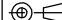
Technical Data

One minute power frequency withstand voltage, 50Hz, wet	=	205 kV
Lightning impulse withstand voltage, 1,2/50, pos.	=	384 kV
Arcing distance	=	580 mm
Minimum creepage distance	=	1476 mm
Specified mechanical load (SML)	=	54 kN
Number of sheds	=	13
Material of fittings	=	Steel, h.d.g.
Weight (approx.)	=	5.7 kg

Square Tongue / Square Tongue in acc. to Drawing No. CEE-TNC-24

SML in acc. to IEC 61109

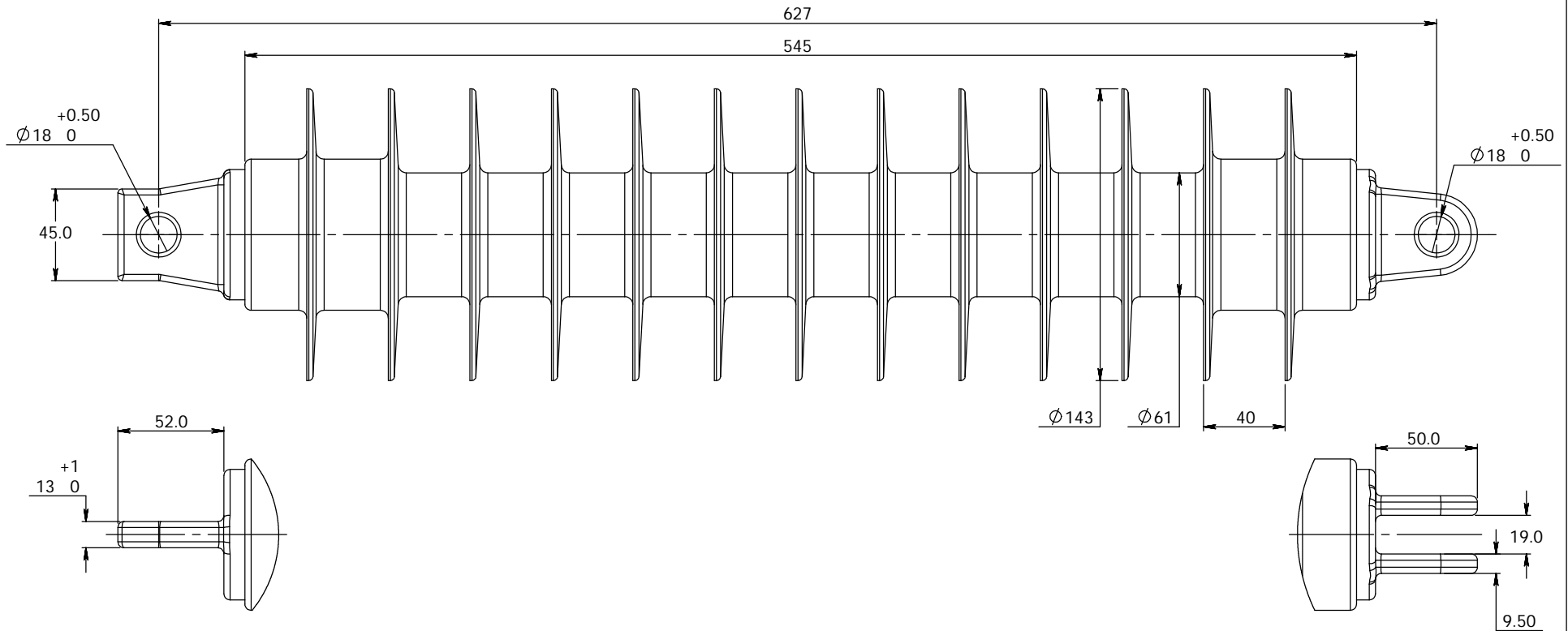
Galvanizing (h.d.g.) acc. to EN ISO 1461

Description Stand - Off Insulator Assembly 25kV AC, Square tongue/tongue (54032617)	Unspecified Tolerances	Weight	Substitute for		
	0, ±1 0,0 ±0.25 0,00 ±0.1 Angles ±1°	kg			
		Drawn By	22/05/2007	R.N	
		Checked By	22/05/2007	ALJ	
		Approved By			
	Material		Revision 000		
	Scale	Drawing/Part Number			
N.T.S.		144 034-016			

PFISTERER

(PTY) LTD

This drawing and its contents are confidential and exclusive property of PFISTERER (PTY) LTD. No publications, copies or distribution may be made without written consent by PFISTERER (PTY) LTD.



Technical Data

One minute power frequency withstand voltage, 50Hz, wet	=	205 kV
Lightning impulse withstand voltage, 1,2/50, pos.	=	384 kV
Arcing distance	=	580 mm
Minimum creepage distance	=	1476 mm
Specified mechanical load (SML)	=	54 kN
Number of sheds	=	13
Material of fittings	=	Steel, h.d.g.
Weight (approx.)	=	5.7 kg

Clevis in acc. to Drawing No. BBB0430

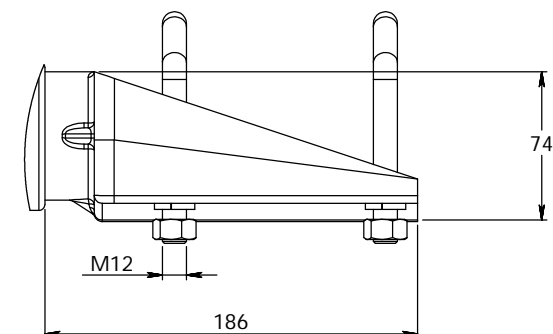
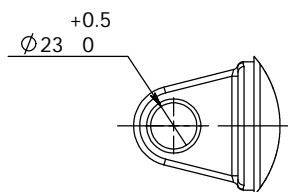
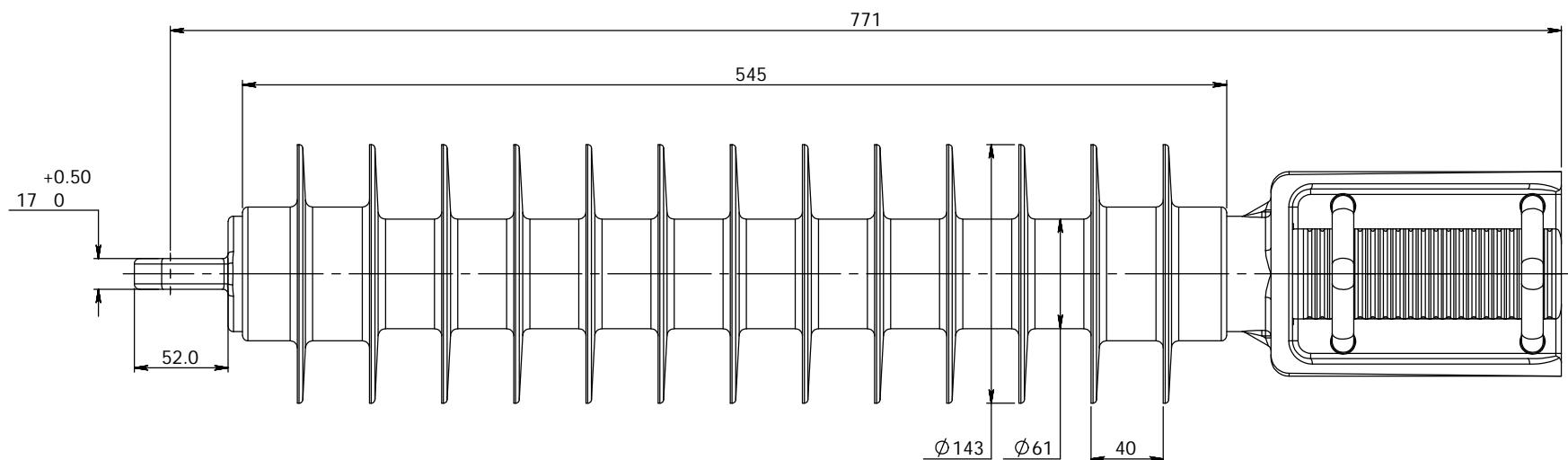
Square Tongue in acc. to Drawing No. CEE-TNC-24

SML in acc. to IEC 61109

Galvanizing (h.d.g.) acc. to EN ISO 1461

Description	Unspecified Tolerances	Weight	Substitute for
Stand - Off Insulator Assembly 25kV AC, Square Tongue / Clevis (54032541)	0, ±1	kg	
	0,0 ±0.25	Drawn By	22/05/2007 R.N
	0,00 ±0.1	Checked By	22/05/2007 ALJ
	Angles ±1°	Approved By	
Material		Revision 000	
Scale		Drawing/Part Number	
PFISTERER (PTY) LTD		N.T.S.	144 034-020

This drawing and its contents are confidential and exclusive property of PFISTERER (PTY) LTD. No publications, copies or distribution may be made without written consent by PFISTERER (PTY) LTD.



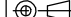
Technical Data

One minute power frequency withstand voltage, 50Hz, wet	=	205 kV
Lightning impulse withstand voltage, 1,2/50, pos.	=	384 kV
Arcing distance	=	580 mm
Minimum creepage distance	=	1476 mm
Specified mechanical load (SML)	=	54 kN
Number of sheds	=	13
Material of fittings	=	Steel, h.d.g.
Weight (approx.)	=	8.0 kg

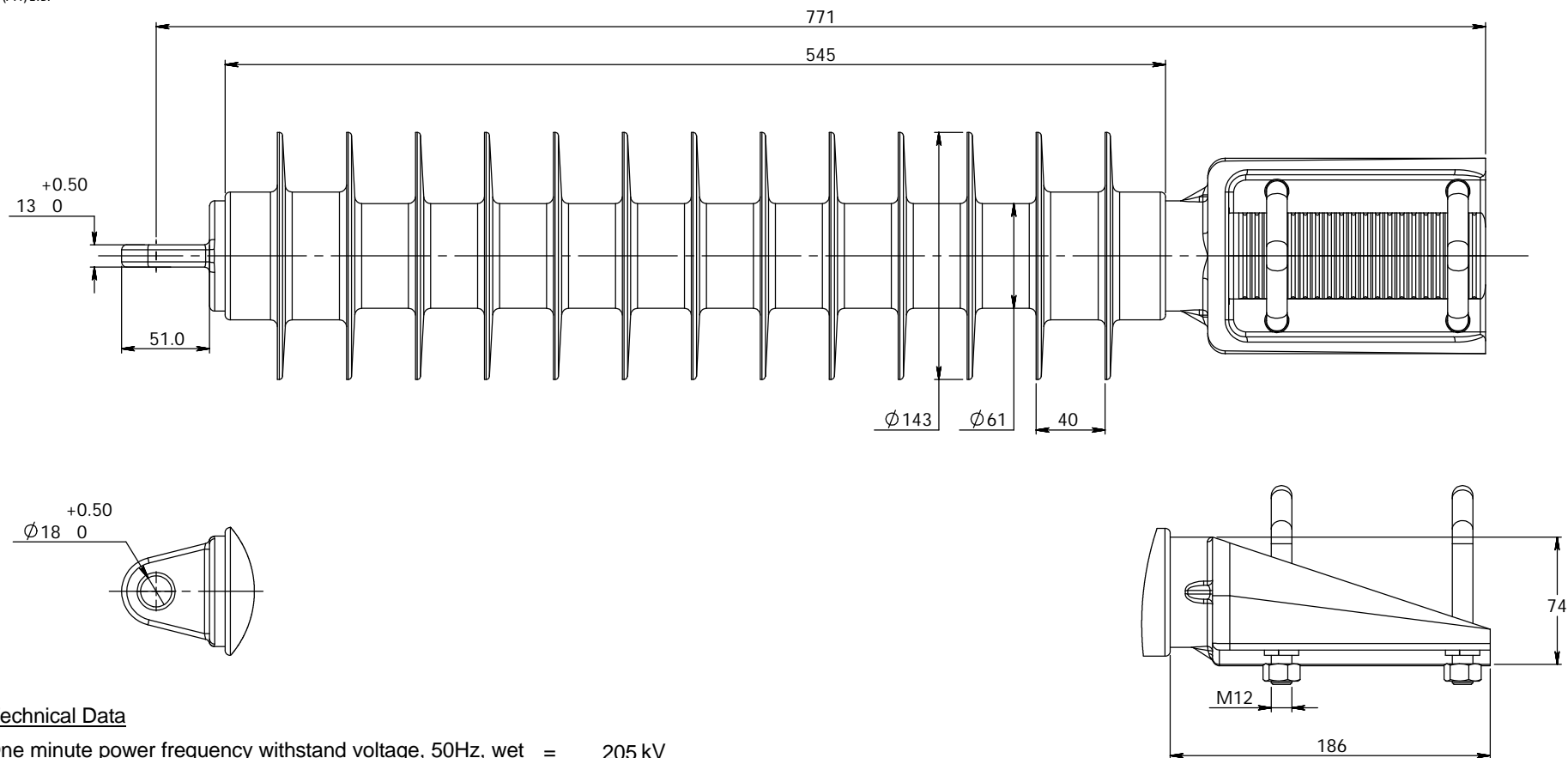
Spade and Tongue in acc. to Drawing No. BBB0430

SML in acc. to IEC 61109

Galvanizing (h.d.g.) acc. to EN ISO 1461

Description Stand - Off Insulator Assembly 25kV AC, Large Round Tongue / Spade Fitting (54033381)	Unspecified Tolerances	Weight	Substitute for	
	0, ±1 0,0 ±0.25 0,00 ±0.1 Angles ±1°	kg		
		Drawn By	22/05/2007	R.N
		Checked By	22/05/2007	ALJ
		Approved By		
	Material		Revision 000	
	Scale		Drawing/Part Number	
PFISTERER (PTY) LTD		N.T.S.	144 034-021	

This drawing and its contents are confidential and exclusive property of PFISTERER (PTY) LTD. No publications, copies or distribution may be made without written consent by PFISTERER (PTY) LTD.



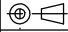
Technical Data

One minute power frequency withstand voltage, 50Hz, wet	=	205 kV
Lightning impulse withstand voltage, 1,2/50, pos.	=	384 kV
Arcing distance	=	580 mm
Minimum creepage distance	=	1476 mm
Specified mechanical load (SML)	=	54 kN
Number of sheds	=	13
Material of fittings	=	Steel, h.d.g.
Weight (approx.)	=	8.0 kg

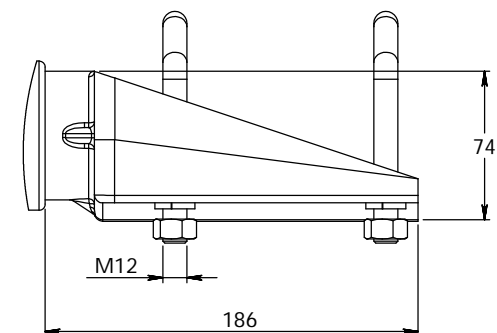
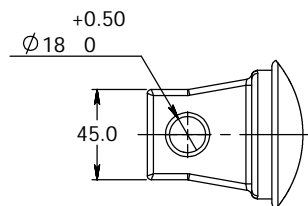
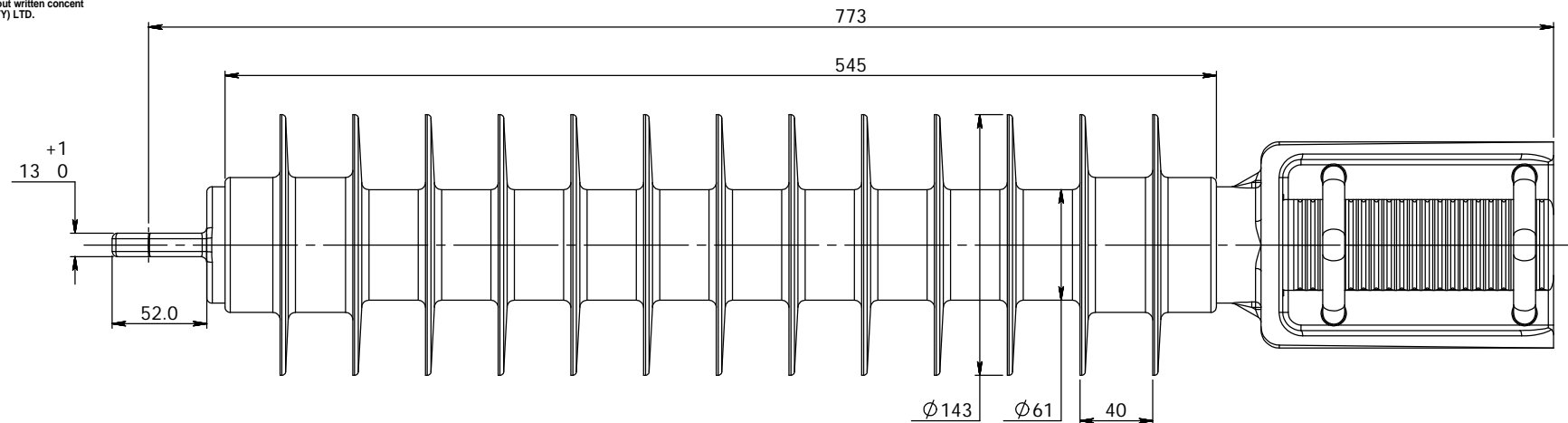
Spade and Tongue in acc. to Drawing No. BBB0430

SML in acc. to IEC 61109

Galvanizing (h.d.g.) acc. to EN ISO 1461

Description Stand - Off Insulator Assembly 25kV AC, Small Round Tongue / Spade Fitting (54032516)	Unspecified Tolerances 0, ±1 0,0 ±0.25 0,00 ±0.1 Angles ±1°	Weight		Substitute for		
		kg				
		Drawn By	22/05/2007	R.N		
			Checked By	22/05/2007	ALJ	
			Approved By			
		Material			Revision	
					000	
Scale		Drawing/Part Number				
N.T.S.		144 034-023				
PFISTERER (PTY) LTD						

This drawing and its contents are confidential and exclusive property of PFISTERER (PTY) LTD. No publications, copies or distribution may be made without written consent by PFISTERER (PTY) LTD.



Technical Data

One minute power frequency withstand voltage, 50Hz, wet	=	205 kV
Lightning impulse withstand voltage, 1,2/50, pos.	=	384 kV
Arcing distance	=	580 mm
Minimum creepage distance	=	1476 mm
Specified mechanical load (SML)	=	54 kN
Number of sheds	=	13
Material of fittings	=	Steel, h.d.g.
Weight (approx.)	=	8.0 kg

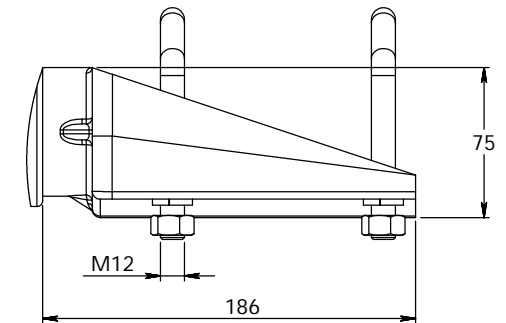
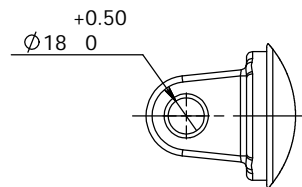
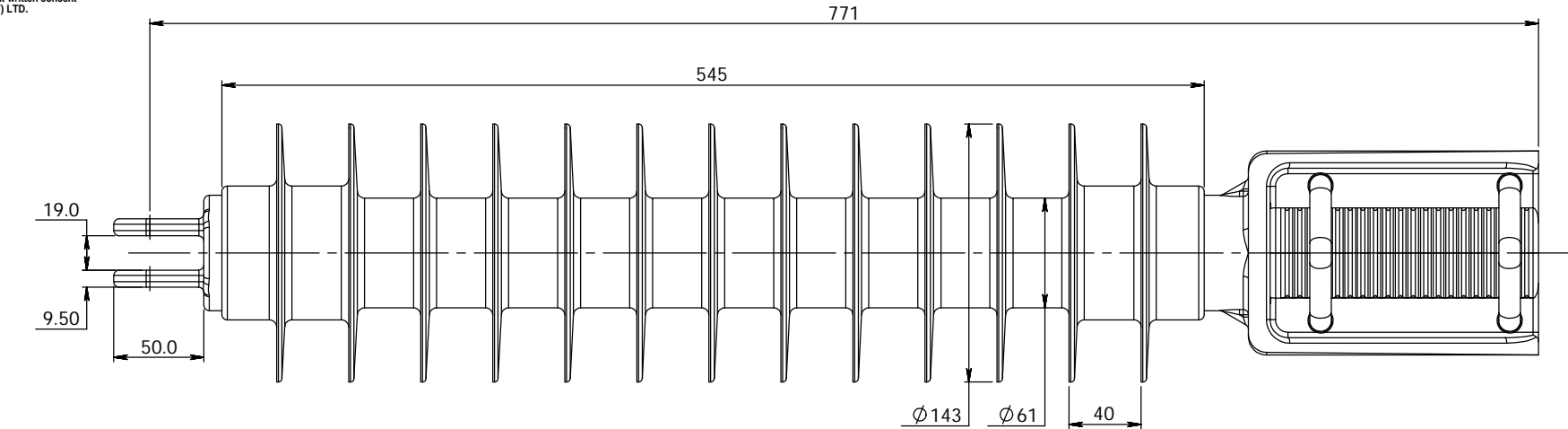
Square Tongue in acc. to Drawing No.CEE-TNC-24
Spade in acc. to Drawing No.BBB0430

SML in acc. to IEC 61109

Galvanizing (h.d.g.) acc. to EN ISO 1461

Description Stand - Off Insulator Assembly 25kV AC,Square Tongue / Spade Fitting (54032528)	Unspecified Tolerances	Weight	Substitute for	
	0, ±1	kg		
	0,0 ±0.25	Drawn By	22/05/2007	R.N
	0,00 ±0.1	Checked By	22/05/2007	ALJ
	Angles ±1°	Approved By		
PFISTERER (PTY) LTD	Material		Revision 000	
	Scale	Drawing/Part Number		
	N.T.S.	144 034-024		

This drawing and its contents are confidential and exclusive property of PFISTERER (PTY) LTD. No publications, copies or distribution may be made without written consent by PFISTERER (PTY) LTD.



Technical Data

One minute power frequency withstand voltage, 50Hz, wet	=	205 kV
Lightning impulse withstand voltage, 1,2/50, pos.	=	384 kV
Arcing distance	=	580 mm
Minimum creepage distance	=	1476 mm
Specified mechanical load (SML)	=	54 kN
Number of sheds	=	13
Material of fittings	=	Steel, h.d.g.
Weight (approx.)	=	8.0 kg

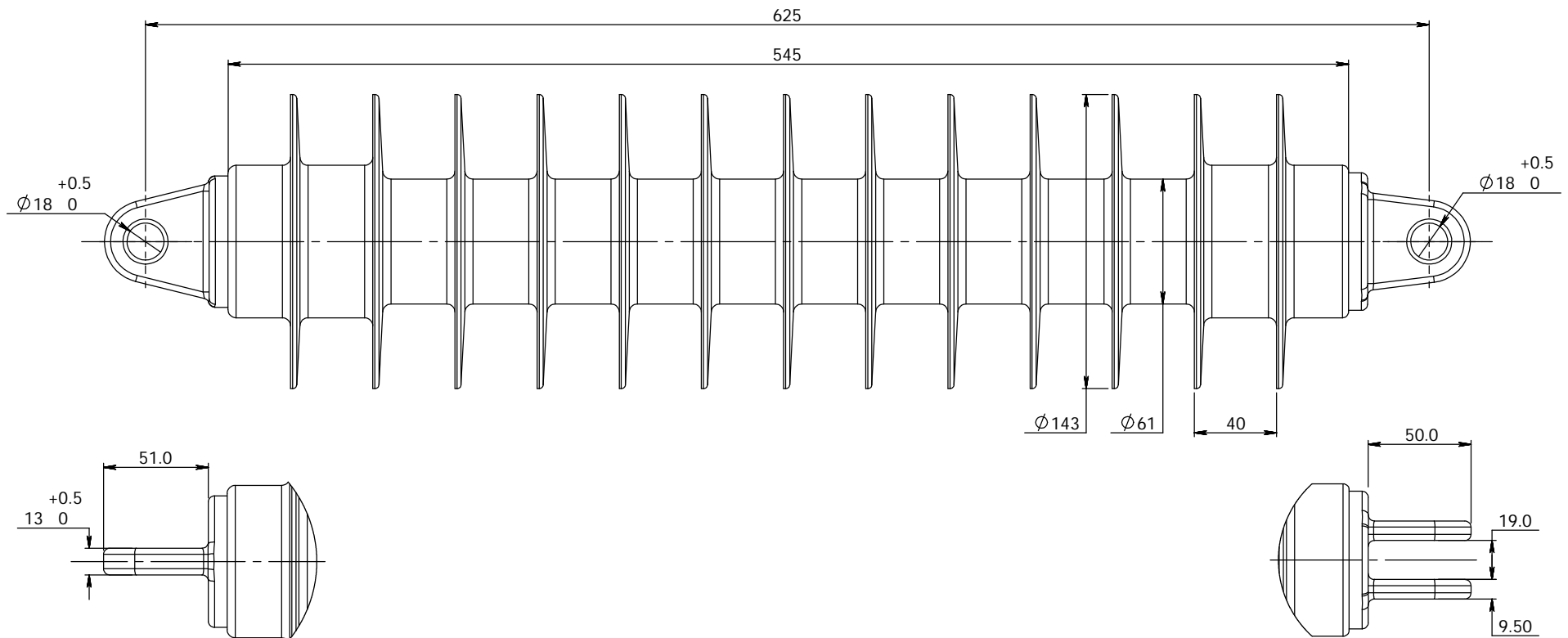
Spade and Clevis in acc. to Drawing No.BBB0430

SML in acc. to IEC 61109

Galvanizing (h.d.g.) acc. to EN ISO 1461

Description	Unspecified Tolerances	Weight	Substitute for
Stand - Off Insulator Assembly 25kV AC,Clevis / Spade Fitting (54032553)	0, ±1	kg	
	0,0 ±0.25	Drawn By	22/05/2007 R.N
	0,00 ±0.1	Checked By	22/05/2007 ALJ
	Angles ±1°	Approved By	
	Material	Revision	000
PFISTERER (PTY) LTD	Scale	Drawing/Part Number	
	N.T.S.	144 034-022	

This drawing and its contents are confidential and exclusive property of PFISTERER (PTY) LTD. No publications, copies or distribution may be made without written consent by PFISTERER (PTY) LTD.



Technical Data

One minute power frequency withstand voltage, 50Hz, wet	=	205 kV
Lightning impulse withstand voltage, 1,2/50, pos.	=	384 kV
Arcing distance	=	580 mm
Minimum creepage distance	=	1476 mm
Specified mechanical load (SML)	=	54 kN
Number of sheds	=	13 kN
Material of fittings	=	Steel, h.d.g.
Weight (approx.)	=	5.7 kg

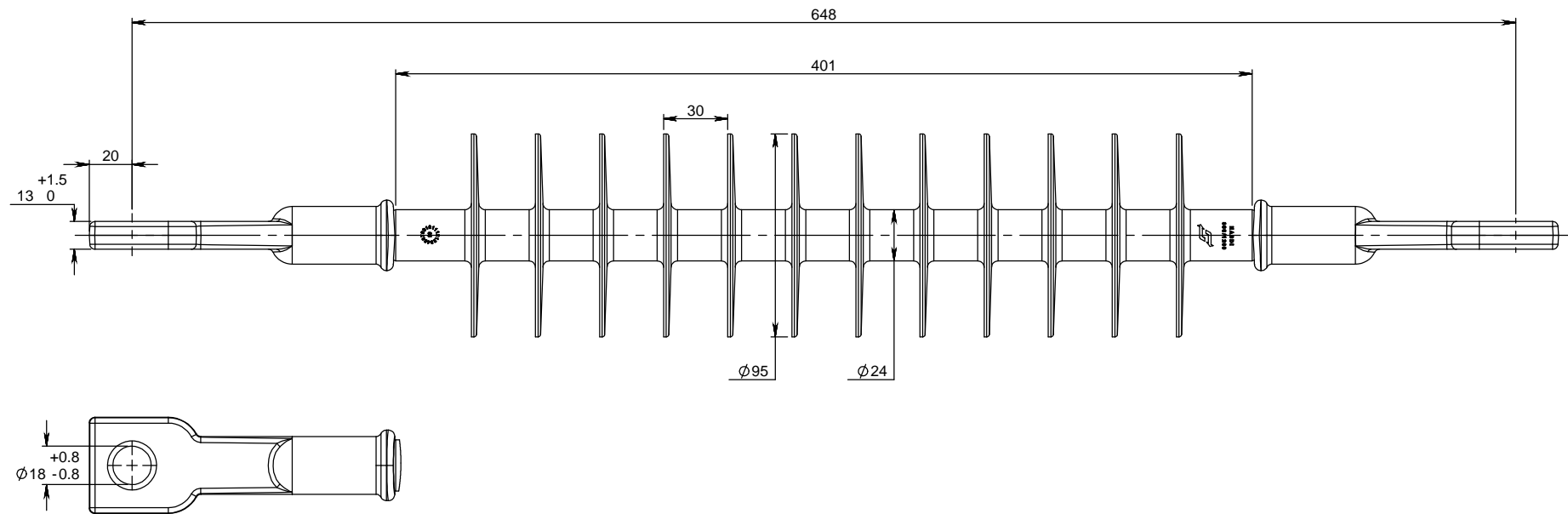
Tongue / Clevis in acc. to Drawing No. BBB0430

SML in acc. to IEC 61109

Galvanizing (h.d.g.) acc. to EN ISO 1461

Description Stand - Off Insulator Assembly 25kV AC, small tongue / Clevis (54032476)	Unspecified Tolerances 0, ±1 0,0 ±0.25 0,00 ±0.1 Angles ±1°	Weight kg	Substitute for	
	Drawn By	22/05/2007	R.N	
	Checked By	22/05/2007	ALJ	
	Approved By			
	Material		Revision	000
Scale PFISTERER (PTY) LTD		N.T.S.	Drawing/Part Number 144 034-018	

This drawing and its contents are confidential and exclusive property of PFISTERER (PTY) LTD. No publications, copies or distribution may be made without written consent by PFISTERER (PTY) LTD.



Technical Data

One minute power frequency withstand voltage, 50Hz, wet = 146 kV
Lightning impulse withstand voltage, 1,2/50, pos. = 285 kV
Arcing distance = 430 mm
Minimum creepage distance = 1200 mm
Specified mechanical load (SML) = 70 kN
Number of sheds = 55
Material of fittings = Steel, h.d.g.
Weight (approx.) = 1.6 kg

Square Tongue in acc. to BBO 0281

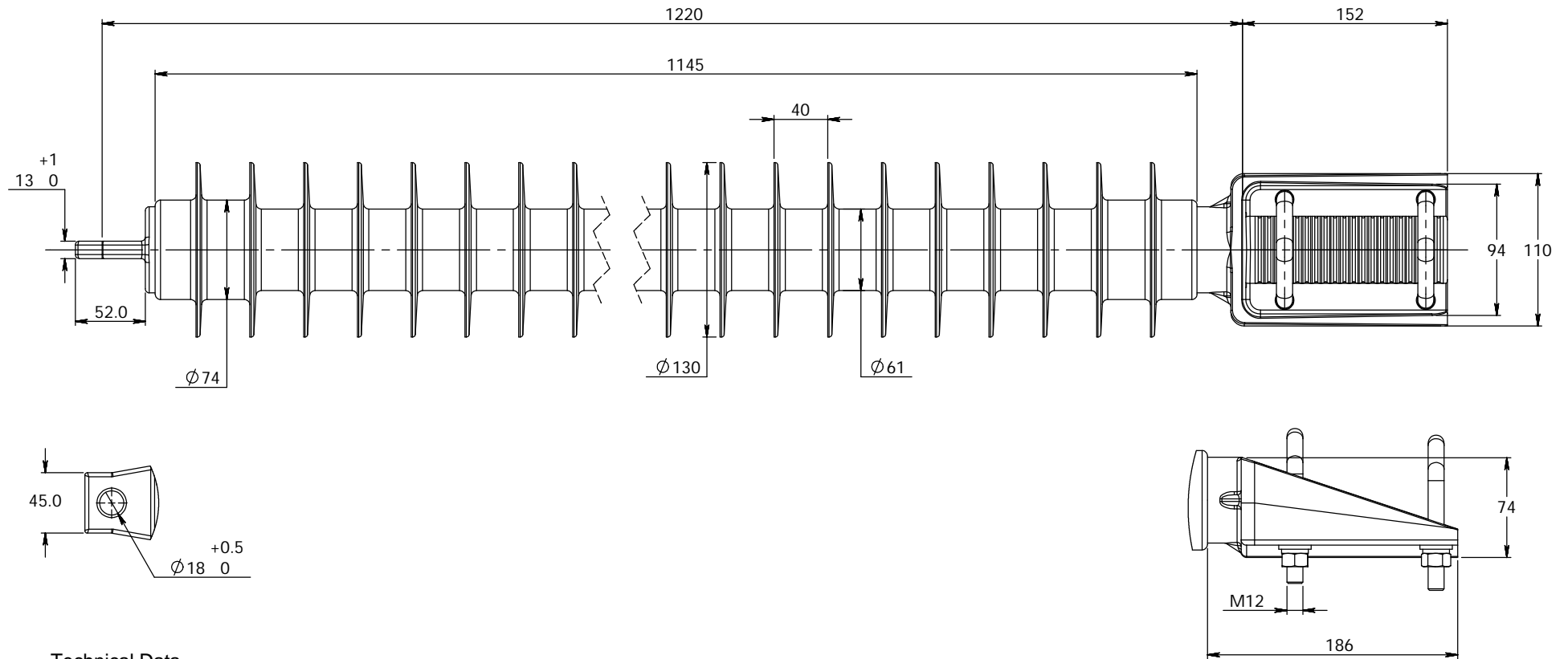
SML in acc. to IEC 61109

Galvanizing (h.d.g.) acc. to EN ISO 1461

Description	Unspecified Tolerances		Weight		Substitute for	
	0, ±1	0,0 ±0.25	kg		Drawn By	05/07
Silicone Insulator HASDI 300/1200 c/w Railway square tongue & square tongue - Straight. (54/32605)	0,00 ±0.1	Angles ±1°	Checked By		05/07	ALJ
	Approved By		Revision			
PFISTERER (PTY) LTD	Material		Scale		Drawing/Part Number	
	N.T.S.		144 034-029			

50kV AC

This drawing and its contents are confidential and exclusive property of PFISTERER (PTY) LTD. No publications, copies or distribution may be made without written consent by PFISTERER (PTY) LTD.



Technical Data

One minute power frequency withstand voltage, 50Hz, wet	=	380kV
Lightning impulse withstand voltage, 1,2/50, pos.	=	744kV
Arcing distance	=	1080 mm
Minimum creepage distance	=	2784 mm
Specified mechanical load (SML)	=	22.3 kN
Number of sheds	=	22
Material of fittings	=	Steel, h.d.g.
Weight (approx.)	=	13.2 kg

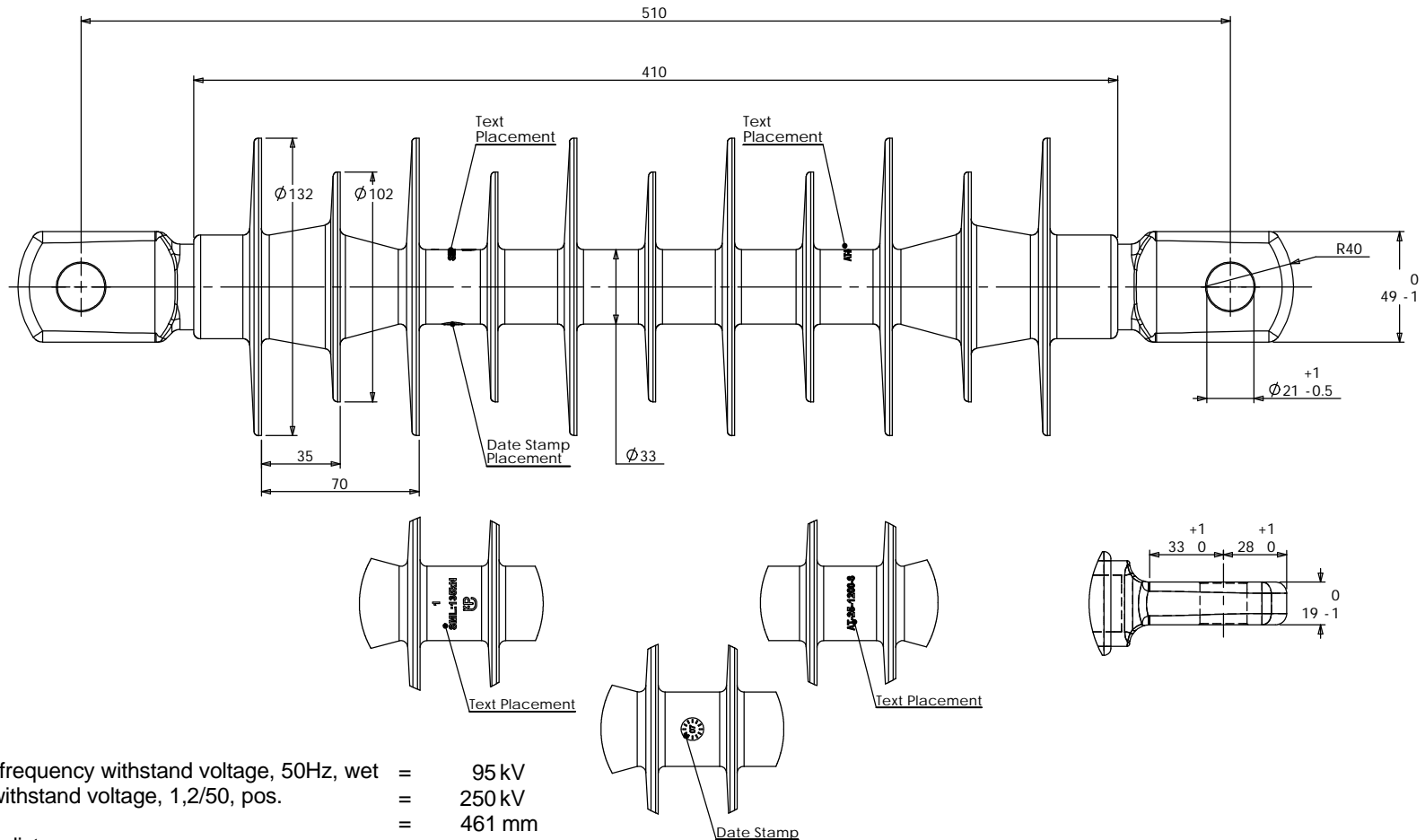
Tongue / Spade Fitting in acc. to Drawing No. CEE-TNC-24

SML in acc. to IEC 61109

Galvanizing (h.d.g.) acc. to EN ISO 1461

Description	Unspecified Tolerances	Weight		Substitute for	
		kg			
50kV AC Stand - Off Insulator Assembly (CEE-TNC-24)	0, ±1	Drawn By	22/05/2007	N.C	
	0,0 ±0.25	Checked By	22/05/2007	H.B.K	
	0,00 ±0.1	Approved By			
	Angles ±1°	Material		Revision	000
PFISTERER (PTY) LTD	Scale	Drawing/Part Number			
	N.T.S.	144 034-015			

Spanish Railway



Technical Data

One minute power frequency withstand voltage, 50Hz, wet	=	95 kV
Lightning impulse withstand voltage, 1,2/50, pos.	=	250 kV
Arcing distance	=	461 mm
Minimum creepage distance	=	1238 mm
Specified mechanical load (SML)	=	135 kN
Routine test load (RTL) in acc. to IEC 61109		
Number of sheds	=	10
Weight (approx.)	=	3.1 kg

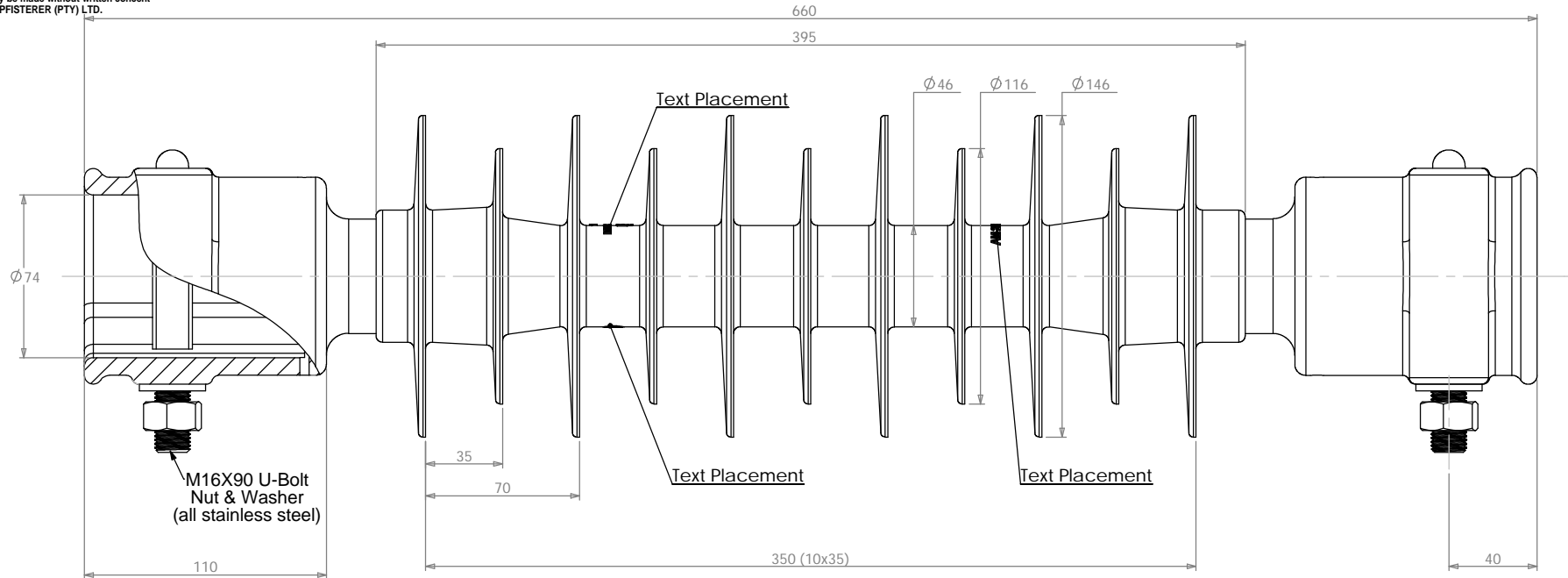
Product manufactured in accordance to UNE 21909 (IEC 61109)

Material

Insulator : E-CR-Glassfibre rod with HTV-Silicone rubber housing
End fittings : Steel, Hot Dip Galvanizing (h.d.g.) acc. to EN ISO 1461

Description	Unspecified Tolerances	Weight	Substitute for	
25kV Silicone insulator with tongue / tongue connection GT-TE-COM-0085	0, ±1	kg		
	0,0 ±0.25	Drawn By	17/05/2007	R.N
	0,00 ±0.1	Checked By	17/05/2007	
	Angles ±1°	Approved By		
Material		Revision 004		
PFISTERER (PTY) LTD		Scale N.T.S.	Drawing/Part Number 144 034-001	

This drawing and its contents are confidential and exclusive property of PFISTERER (PTY) LTD. No publications, copies or distribution may be made without written consent by PFISTERER (PTY) LTD.



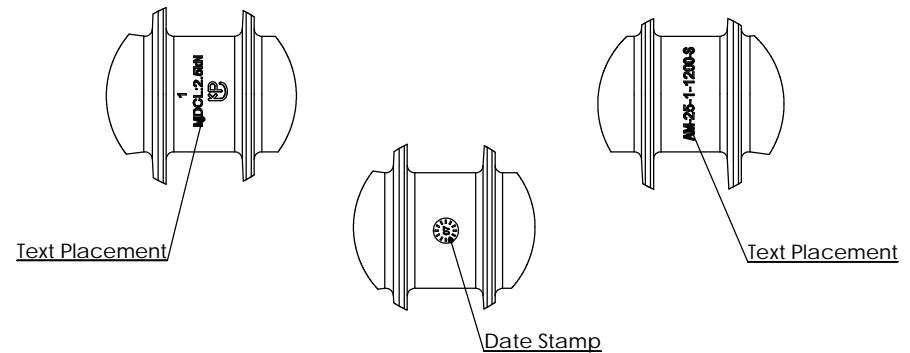
Technical Data

One minute power frequency withstand voltage, 50Hz, wet	=	95 kV
Lightning impulse withstand voltage, 1,2/50, pos.	=	250 kV
Arcing distance	=	454 mm
Minimum creepage distance	=	1241 mm
Specified Cantilever load (SCL)	=	6 kN
Maximum design cantilever load (MDCL)	=	1.5 kN
Specified tensile load (STL)	=	60 kN
Routine test load (RTL) in acc. to IEC 61952		
Number of sheds (Large/Small)	=	6/5
Material of fittings	=	Steel, HDG
Weight (approx.)	=	6 kg

Product manufactured in accordance to CEI 61952 (IEC 61952)

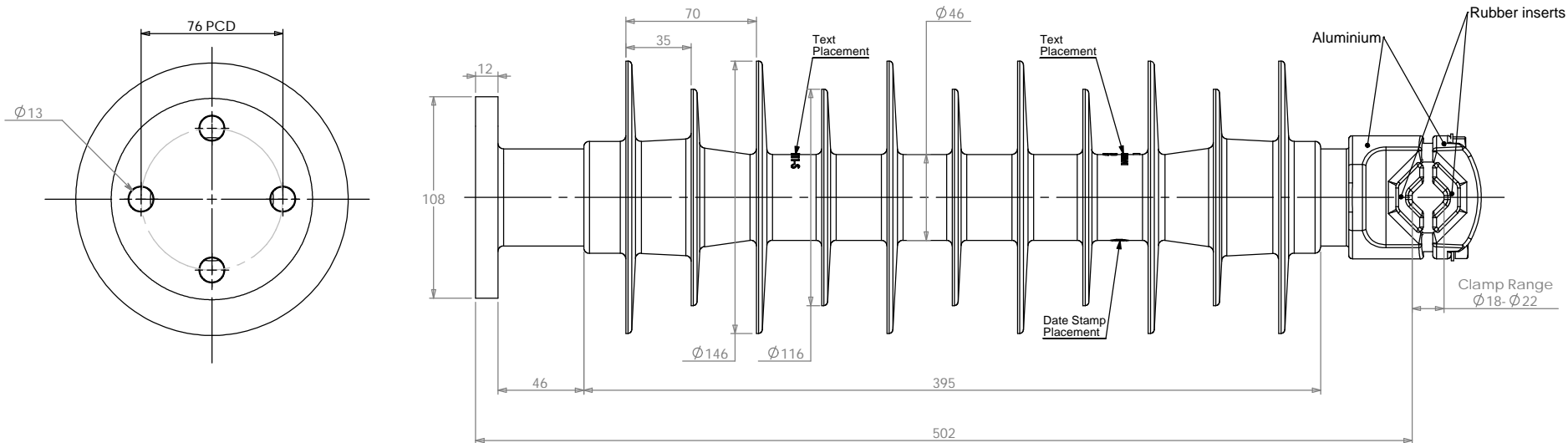
Material :

Insulator	=	E-CR-Glassfibre rod with HTV Silicone rubber housing
End Fittings	=	SG 42 Hot Dip Galvanised
U-Bolts	=	Stainless Steel



Description	Unspecified Tolerances	Weight	Substitute for
25kV Silicone insulator with tube / tube connection	0, ±1	kg	
	0,0 ±0,25	Drawn By	29/03/2007 N.C
	0,00 ±0,1	Checked By	
	Angles ±1°	Approved By	
AM-25-1-1200 (S)	Material	Revision	004
PFISTERER (PTY) LTD	Scale	Drawing/Part Number	
	N.T.S.	144 034-002	

This drawing and its contents are confidential and exclusive property of PFISTERER (PTY) LTD. No publications, copies or distribution may be made without written consent by PFISTERER (PTY) LTD.



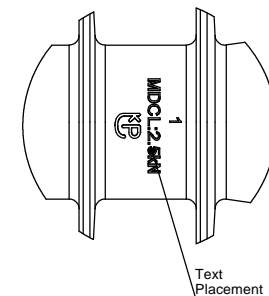
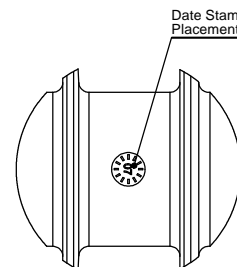
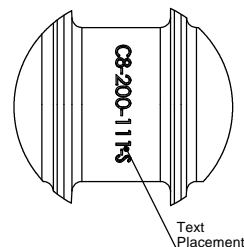
Technical Data


One minute power frequency withstand voltage, 50Hz, wet	=	95kV
Lightning impulse withstand voltage, 1,2/50, pos.	=	250kV
Arcing distance	=	454 mm
Minimum creepage distance	=	1241 mm
Specified Cantilever load (SCL)	=	8kN
Maximum design cantilever load (MDCL)	=	2.5kN
Specified tensile load (STL)	=	60kN
Number of sheds (large/Small)	=	6/5
Weight (approx.)	=	6 kg

Product manufactured in accordance to CEI 61952(IEC61952)

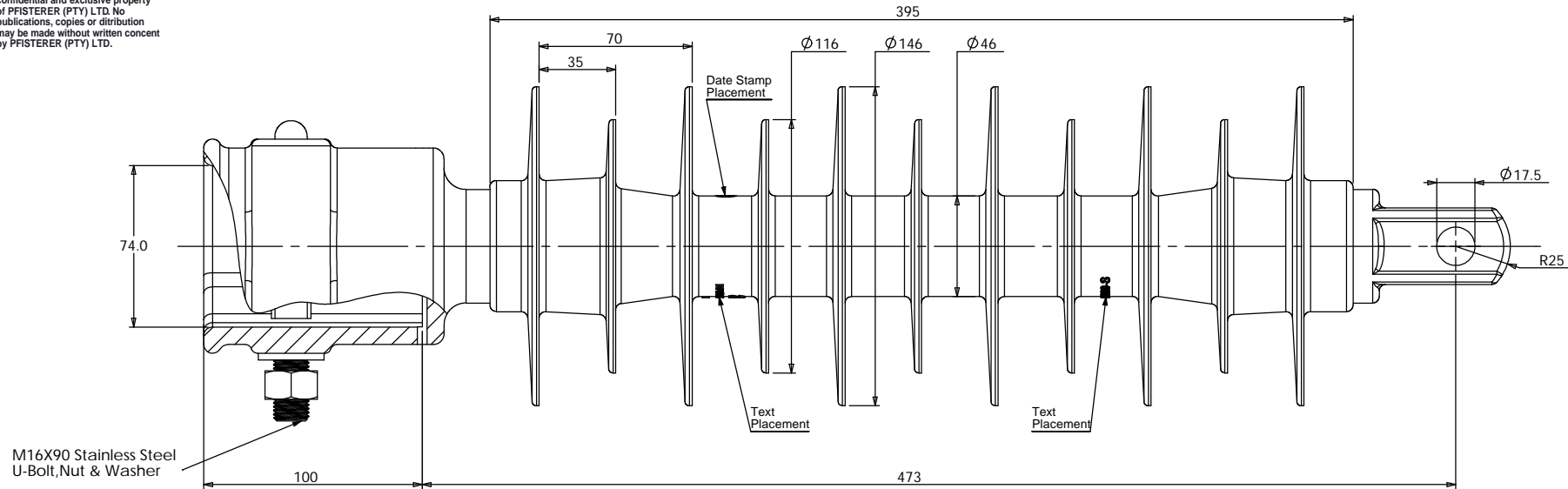
Material :

Insulator	=	E-CR-Glassfibre rod with HTV Silicone rubber housing
Base Fitting	=	Steel, Hot Dip Galvanised acc. to EN ISO 1461
Head Fitting	=	Aluminium Alloy with rubber inserts



Description 25kV Silicone insulator with Flat / BLX Head C8-200-III (S)	Unspecified Tolerances 0, ±1 0,0 ±0.25 0,00 ±0.1 Angles ±1°		Weight kg		Substitute for	
	Drawn By		31/10/2006		HBK	
	Checked By					
			Approved By			
	Material				Revision	
					002	
PFISTERER (PTY) LTD			Scale		Drawing/Part Number	
			N.T.S.		144 034-003	

This drawing and its contents are confidential and exclusive property of PFISTERER (PTY) LTD. No publications, copies or distribution may be made without written consent by PFISTERER (PTY) LTD.



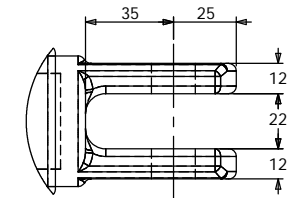
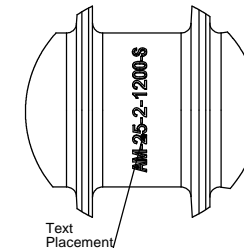
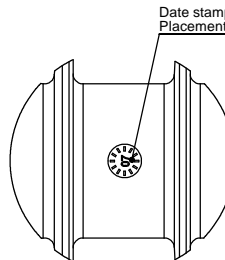
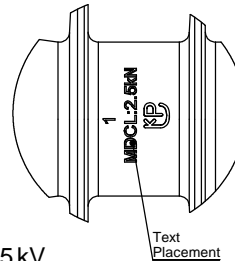
Technical Data

One minute power frequency withstand voltage, 50Hz, wet	= 95 kV
Lightning impulse withstand voltage, 1,2/50, pos.	= 250 kV
Arcing distance	= 454 mm
Minimum creepage distance	= 1241 mm
Specified Cantilever load (SCL)	= 6 kN
Maximum design cantilever load (MDCL)	= 1.9 kN
Specified tensile load (STL)	= 60 kN
Routine test load (RTL) in acc. to IEC 61952	
Number of sheds (Small/Large)	= 5/6
Material of fittings	= Steel, HDG
Weight (approx.)	= 5.6 kg

Product manufactured in accordance to CEI61952(IEC61952)

Material :

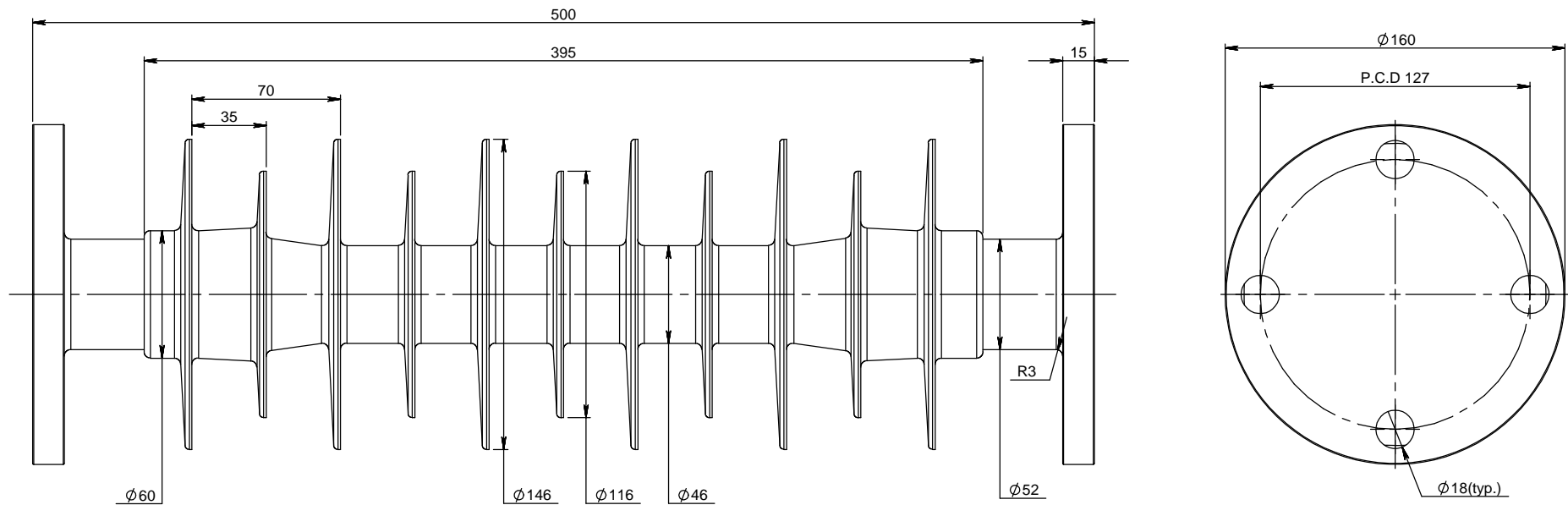
Insulator	= E-CR-Glassfibre rod with HTV Silicone rubber housing
End Fittings	= SG 42 Hot Dip Galvanised
U-Bolts	= Stainless Steel



Description	Unspecified Tolerances	Weight	Substitute for
25kV Silicone insulator with tube / clevis connection	0, ±1	kg	
	0,0 ±0.25	Drawn By	03/04/2007 N.C
	0,00 ±0.1	Checked By	03/04/2007
	Angles ±1°	Approved By	
AM-25-2-1200 (S)	Material	Revision	004
PFISTERER (PTY) LTD	Scale	Drawing/Part Number	
	N.T.S.	144 034-004	

Gautrain Insulators

This drawing and its contents are confidential and exclusive property of PFISTERER (PTY) LTD. No publications, copies or distribution may be made without written consent by PFISTERER (PTY) LTD.



Technical Data

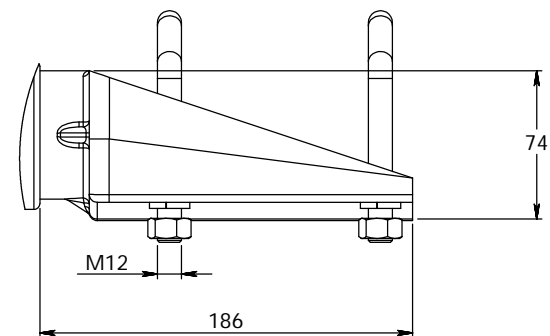
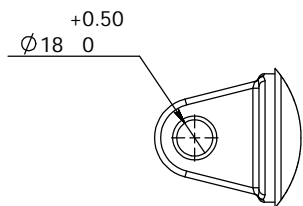
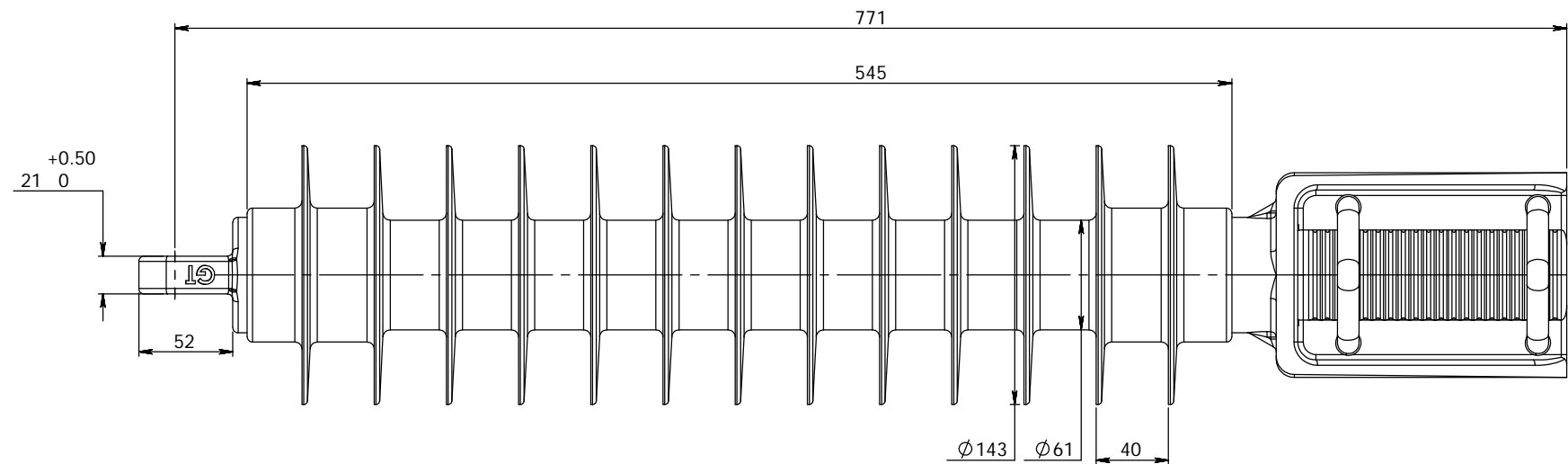
One minute power frequency withstand voltage, 50Hz, wet	= 95 kV
Lighting impulse withstand voltage, 1,2/50, pos.	= 250 kV
Arcing distance	= 454 mm
Minimum creepage distance	= 1241 mm
Specified Cantilever load (SCL)	= 6 kN
Maximum design cantilever load (MDCL)	= 2 kN
Specified tensile load (STL)	= 40 kN
Number of Sheds (Small/Large)	= 5/6
Material of fittings	= Steel, HDG
Weight (approx)	= 8.0 kg

Material

Insulator	= E-CR-Glassfibre rod with HTV Silicone rubber housing
End Fittings	= SG42 Hot Dip Galvanised

Description	Unspecified Tolerances	Weight	Substitute for	
25kV Silicone Post Insulator c/w Steel Flange Fittings GT-TE-COM-0109	0, ±1	kg	Drawn By	17/05/07 R.N
	0,0 ±0.25		Checked By	17/05/07 ALJ
	0,00 ±0.1		Approved By	
	Angles ±1°		Material	Revision 000
PFISTERER (PTY) LTD		Scale N.T.S.	Drawing/Part Number 144 034-011	

This drawing and its contents are confidential and exclusive property of PFISTERER (PTY) LTD. No publications, copies or distribution may be made without written consent by PFISTERER (PTY) LTD.



Technical Data

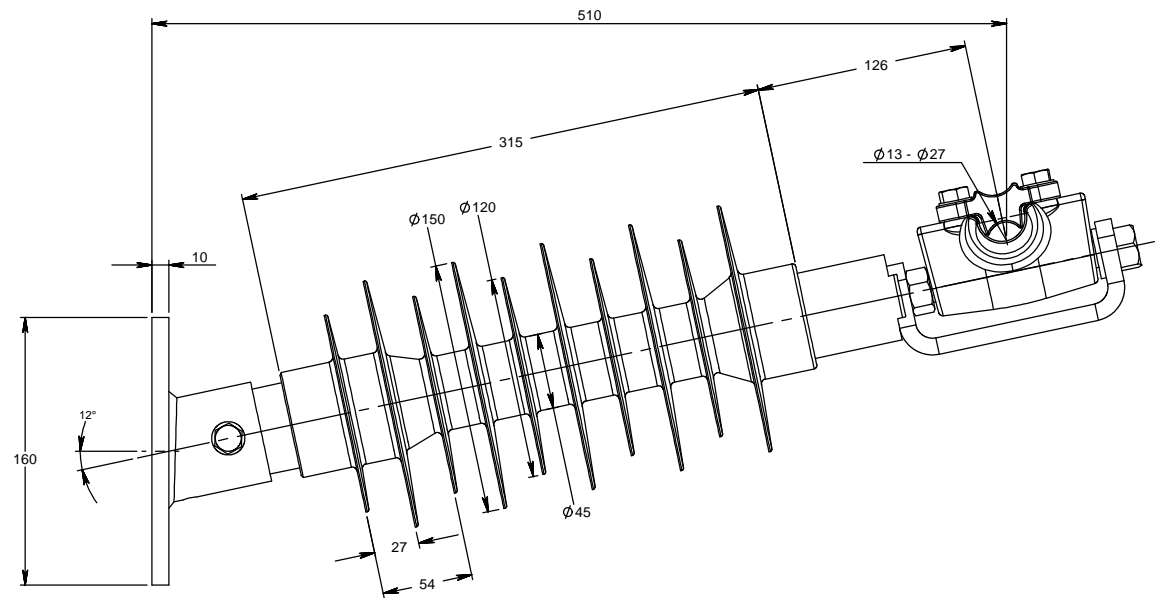
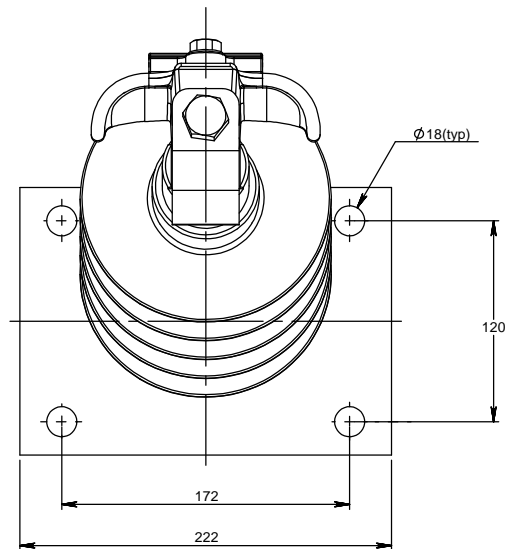
One minute power frequency withstand voltage, 50Hz, wet	=	205 kV
Lightning impulse withstand voltage, 1,2/50, pos.	=	384 kV
Arcing distance	=	580 mm
Minimum creepage distance	=	1476 mm
Specified mechanical load (SML)	=	54 kN
Number of sheds	=	13
Material of fittings	=	Steel, h.d.g.
Weight (approx.)	=	8.0 kg

SML in acc. to IEC 61109

Galvanizing (h.d.g.) acc. to EN ISO 1461

Description	Unspecified Tolerances 0, ±1 0,0 ±0.25 0,00 ±0.1 Angles ±1°	Weight kg		Substitute for	
		Drawn By	05/07	R.N	
25kV AC Stand-Off Insulator Assembly c/w Gautrain Tongue / Spade Fitting GT-TE-COM-0022		Checked By	05/07		
		Approved By			
		Material		Revision	000
PFISTERER (PTY) LTD	Scale	Drawing/Part Number			
	N.T.S.	144 034-012			

This drawing and its contents are confidential and exclusive property of PFISTERER (PTY) LTD. No publications, copies or distribution may be made without written consent by PFISTERER (PTY) LTD.

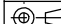


Technical Data

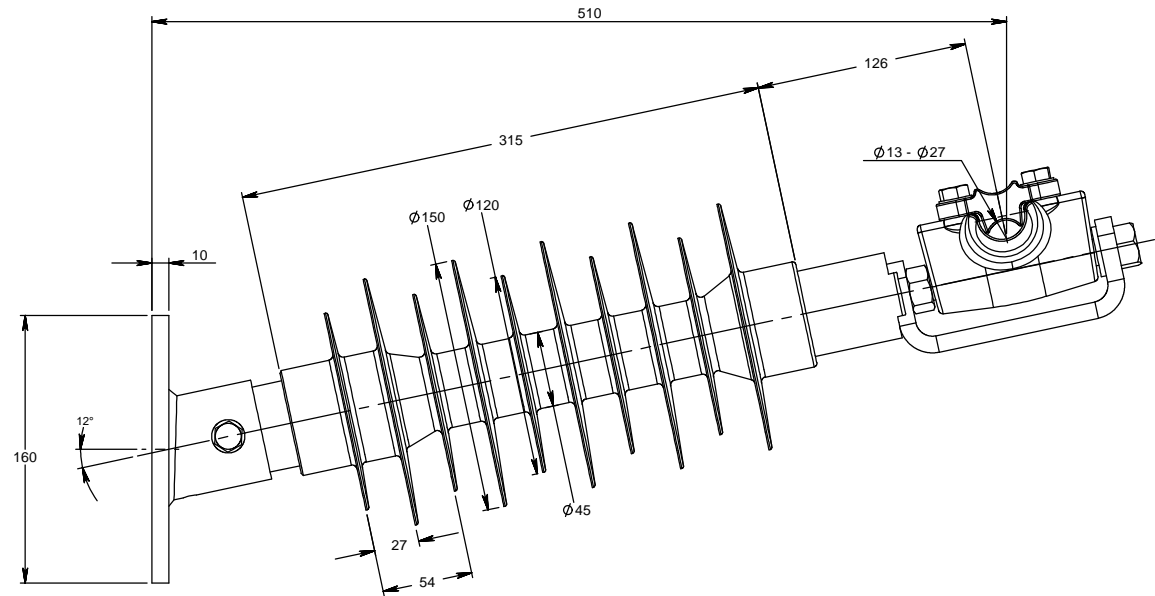
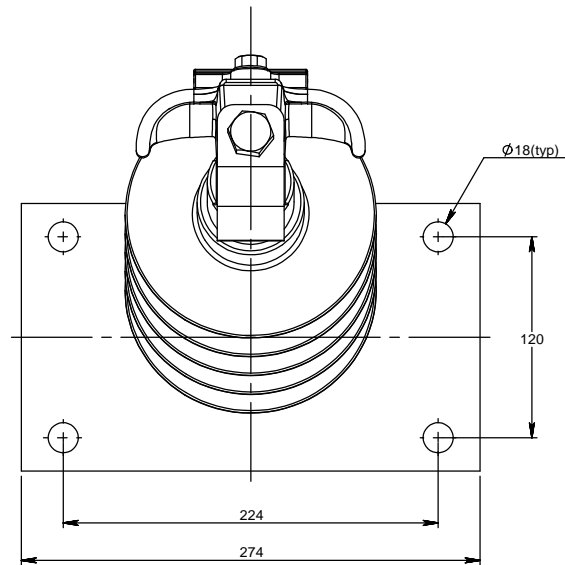
One minute power frequency withstand voltage, 50Hz, wet	= 114 kV
Lightning impulse withstand voltage, 1,2/50, pos.	= 255 kV
Arcing distance	= 350 mm
Minimum creepage distance	= 1118 mm
Specified cantilever load (SCL)	= 3 kN
Maximum design cantilever load (MDCL)	= 1.5 kN
Number of small/large sheds	= 5/5

SCL and MDCL are in acc. to IEC 61952

Galvanizing (h.d.g.) acc. to EN ISO 1461

Description 36kV Side Mount Post Insulator c/w Gain Base (154) GT-TE-COM-0021	Unspecified Tolerances 0, ±1 0,0 ±0.25 0,00 ±0.1 Angles ±1°	Weight		Substitute for	
		kg			
		Drawn By	05/07	R.N	
		Checked By	05/07	ALJ	
			Approved By		
Material			Revision 000		
PFISTERER (PTY) LTD	Scale	Drawing/Part Number			
	N.T.S.	144 034-013			

This drawing and its contents are confidential and exclusive property of PFISTERER (PTY) LTD. No publications, copies or distribution may be made without written consent by PFISTERER (PTY) LTD.



Technical Data

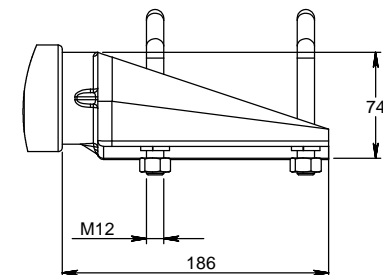
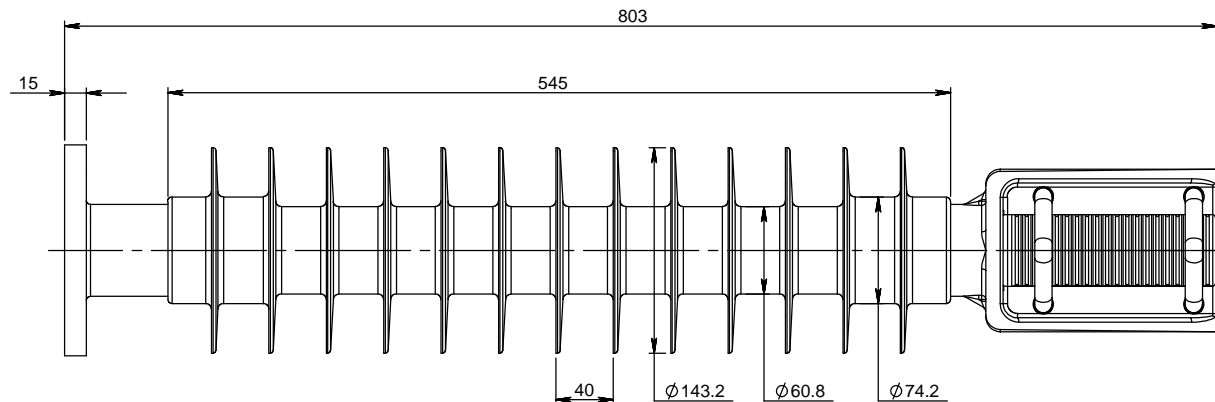
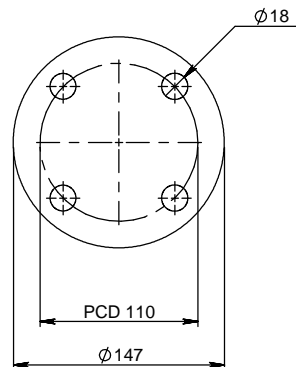
One minute power frequency withstand voltage, 50Hz, wet	= 114 kV
Lightning impulse withstand voltage, 1,2/50, pos.	= 255 kV
Arcing distance	= 350 mm
Minimum creepage distance	= 1118 mm
Specified cantilever load (SCL)	= 3 kN
Maximum design cantilever load (MDCL)	= 1.5 kN
Number of small/large sheds	= 5/5

SCL and MDCL are in acc. to IEC 61952

Galvanizing (h.d.g.) acc. to EN ISO 1461

Description 36kV Side Mount Post Insulator c/w Gain Base (203 - 206) GT-TE-COM-0099	Unspecified Tolerances 0, ±1 0,0 ±0.25 0,00 ±0.1 Angles ±1°	Weight		Substitute for	
		kg			
		Drawn By	05/07	R.N	
		Checked By	05/07	ALJ	
		Approved By			
		Material		Revision	
PFISTERER (PTY) LTD	Scale	Drawing/Part Number			
	N.T.S.	144 034-014			

This drawing and its contents are confidential and exclusive property of PFISTERER (PTY) LTD. No publications, copies or distribution may be made without written consent by PFISTERER (PTY) LTD.



Technical Data

One minute power frequency withstand voltage, 50Hz, wet	=	205 kV
Lightning impulse withstand voltage, 1,2/50, pos.	=	384 kV
Arcing distance	=	580 mm
Minimum creepage distance	=	1476 mm
Specified mechanical load (SML)	=	54 kN
Number of sheds	=	13
Material of fittings	=	Steel, h.d.g.
Weight (approx.)	=	8.0 kg

Maximum deflection @ 2000mm with 50kg = 30mm
(Assuming zero deflection in interconnection)

Spade in acc. to Drawing No.BBB0430

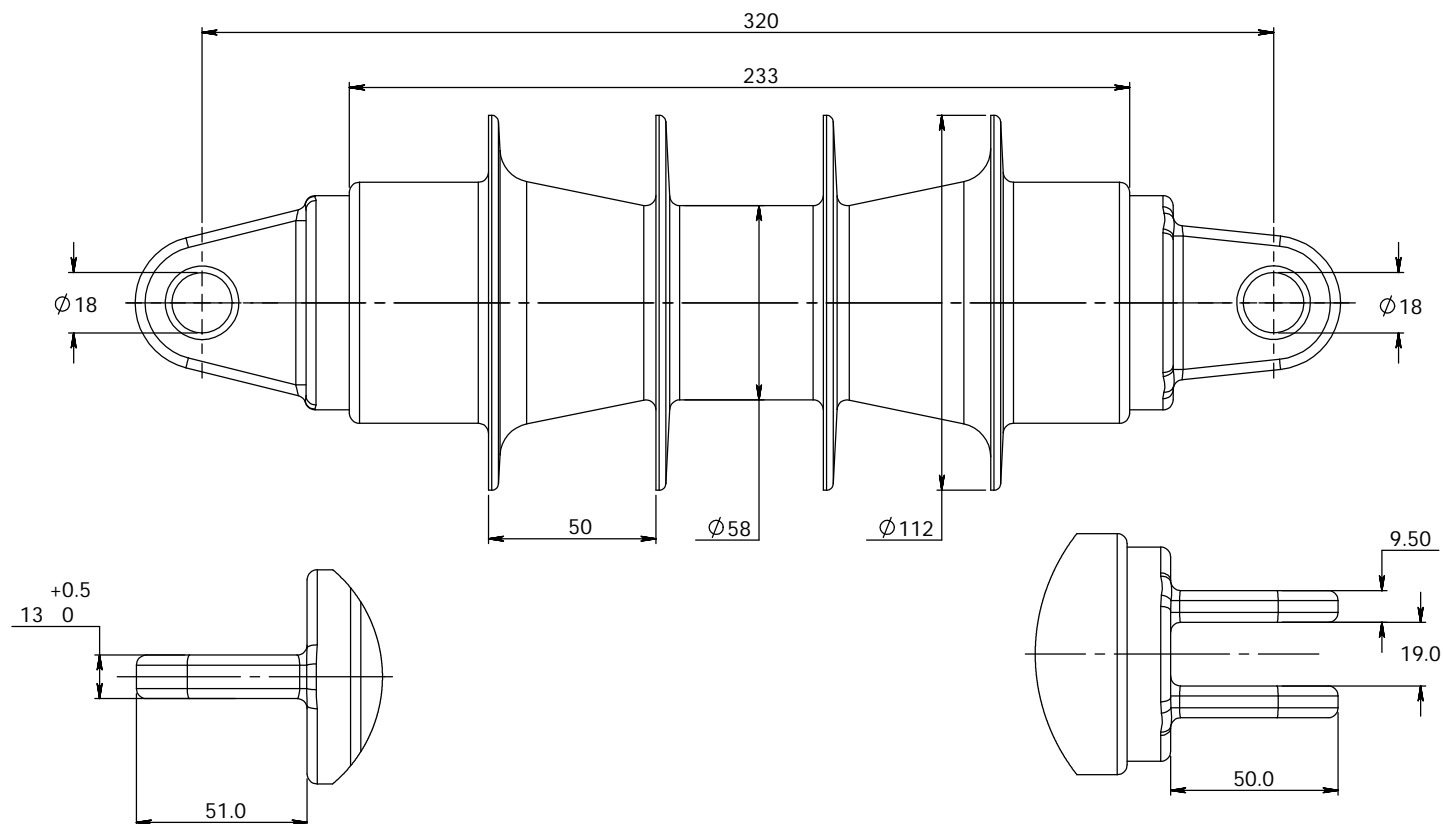
SML in acc. to IEC 61109

Galvanizing (h.d.g.) acc. to EN ISO 1461

Description	Unspecified Tolerances	Weight	Substitute for	
Stand - Off Insulator Assembly 25kV AC, 4 Hole Flange Base (PCD 110) / Spade Fitting (GT-TE-COM-0147)	0, ±1	kg	Drawn By	06/07 R.N
	0,0 ±0.25		Checked By	06/07 ALJ
	0,00 ±0.1		Approved By	
	Angles ±1°		Material	Revision
PFISTERER (PTY) LTD	Scale	Drawing/Part Number		
	N.T.S.	144 034-032		

3kV DC Insulators

This drawing and its contents are confidential and exclusive property of PFISTERER (PTY) LTD. No publications, copies or distribution may be made without written consent by PFISTERER (PTY) LTD.



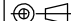
Technical Data

One minute power frequency withstand voltage, 50Hz, wet	=	65 kV
Lightning impulse withstand voltage, 1,2/50, pos.	=	175 kV
Arcing distance	=	248 mm
Minimum creepage distance	=	406 mm
Specified mechanical load (SML)	=	54 kN
Number of sheds	=	4
Material of fittings	=	Steel, h.d.g.
Weight (approx.)	=	5.5 kg

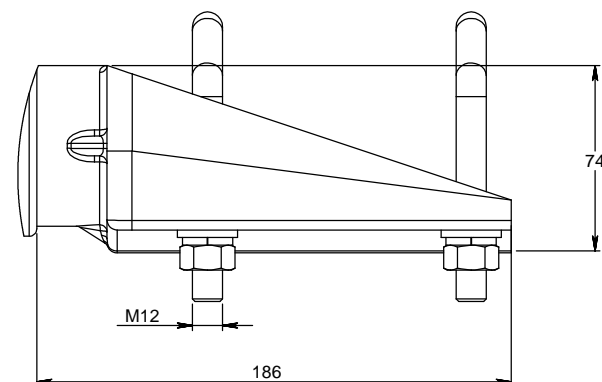
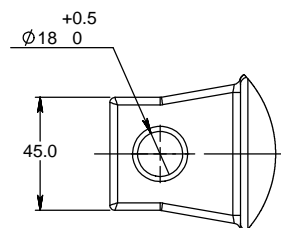
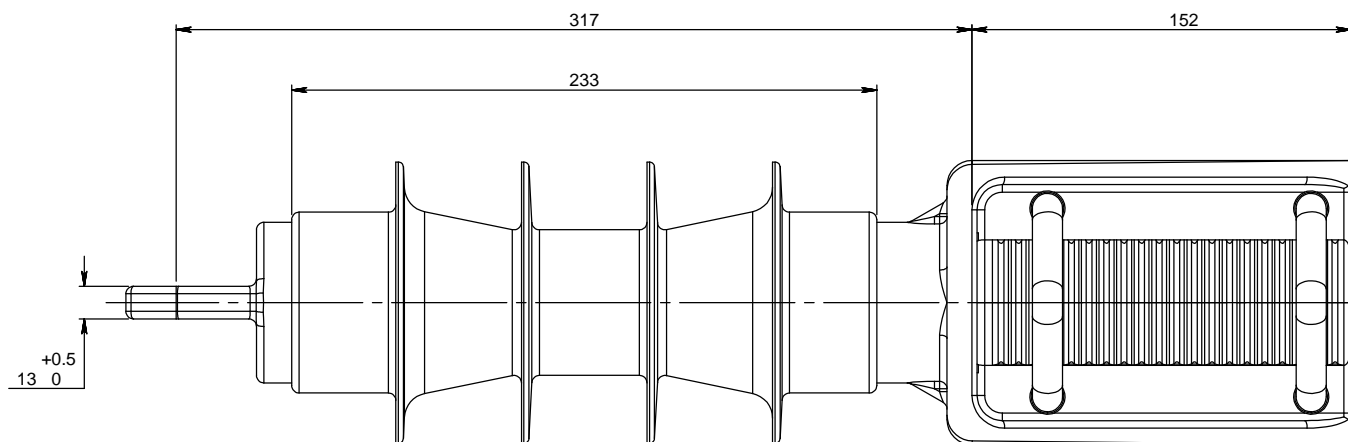
Small Round Tongue / Clevis End Fitting in acc. to Drawing BBB0430

SML in acc. to IEC 61109

Galvanizing (h.d.g.) acc. to EN ISO 1461

Description Compression - Tension insulator Clevis / Small Round Tongue 54 016897	Unspecified Tolerances	Weight	Substitute for	
	0, ±1 0,0 ±0.25 0,00 ±0.1 Angles ±1°	kg		
		Drawn By	22/05/2007	R.N
		Checked By	22/05/2007	ALJ
		Approved By		
	Material		Revision	000
	Scale	Drawing/Part Number		
N.T.S.		144 034-025		

This drawing and its contents are confidential and exclusive property of PFISTERER (PTY) LTD. No publications, copies or distribution may be made without written consent by PFISTERER (PTY) LTD.



Technical Data

One minute power frequency withstand voltage, 50Hz, wet	=	65 kV
Lightning impulse withstand voltage, 1,2/50, pos.	=	175 kV
Arcing distance	=	248 mm
Minimum creepage distance	=	406 mm
Specified mechanical load (SML)	=	54 kN
Number of sheds	=	4
Material of fittings	=	Steel, h.d.g
Weight (approx.)	=	5.5 kg

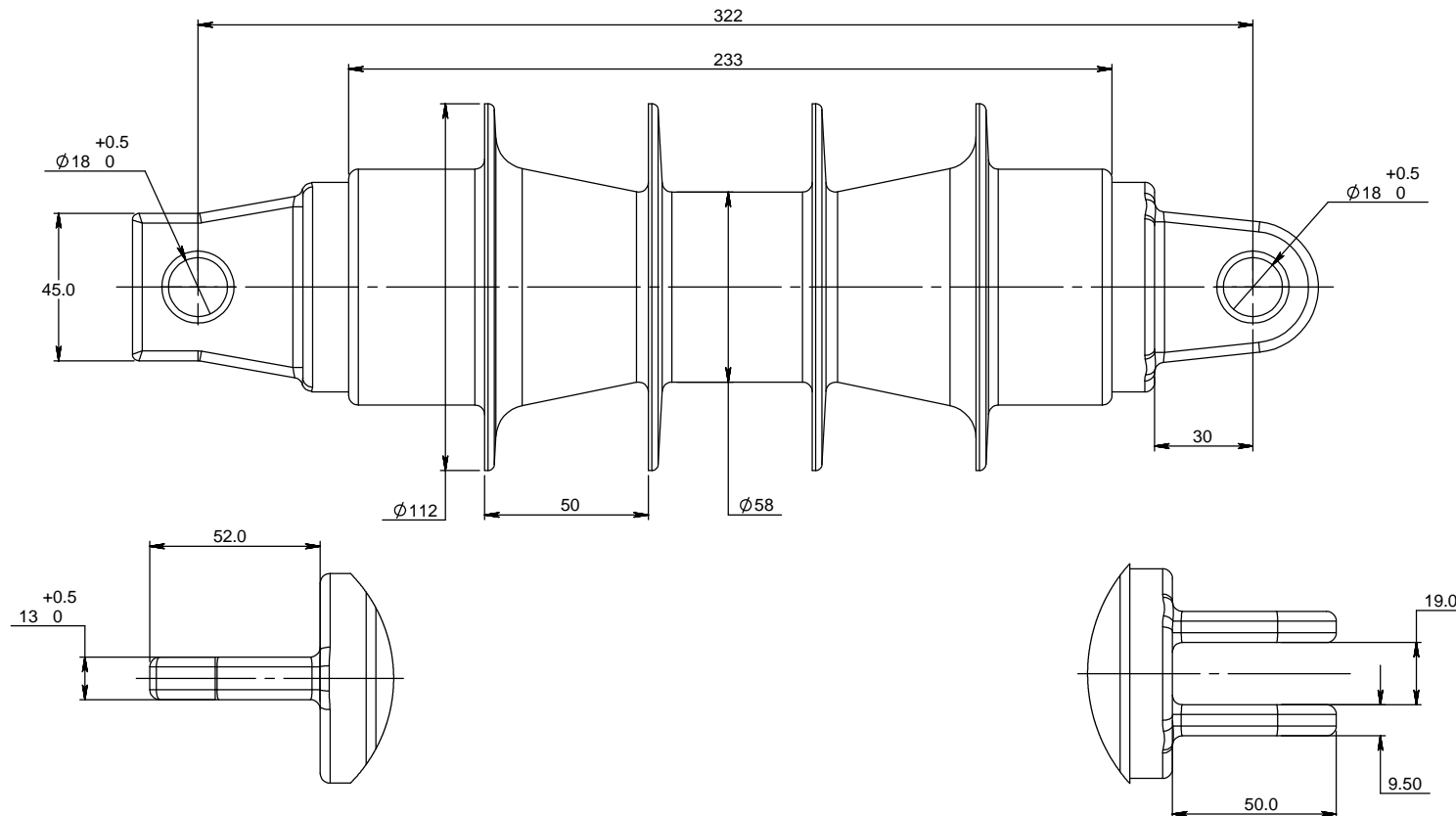
Tongue / Spade Fitting in acc. to Drawing No. CEE-TNC-24

SML are in acc. to IEC 61109

Galvanizing (h.d.g.) acc. to EN ISO 1461

Description	Unspecified Tolerances	Weight		Substitute for	
		kg			
3kV/dc Compression - Tension Insulator, c/w Square Tongue / Spade Fitting	0, ±1	Drawn By	22/05/2007	R.N	
	0,0 ±0.25	Checked By	22/05/2007	ALJ	
	0,00 ±0.1	Approved By			
	Angles ±1°	Material		Revision	000
PFISTERER (PTY) LTD	Scale	Drawing/Part Number			
	N.T.S.	144 034-026			

This drawing and its contents are confidential and exclusive property of PFISTERER (PTY) LTD. No publications, copies or distribution may be made without written consent by PFISTERER (PTY) LTD.




Technical Data

One minute power frequency withstand voltage, 50Hz, wet	=	65kV
Lightning impulse withstand voltage, 1,2/50, pos.	=	175kV
Arcing distance	=	248mm
Minimum creepage distance	=	406mm
Specified mechanical load (SML)	=	54kN
Number of sheds	=	4
Material of fittings	=	Steel, h.d.g.
Weight (approx.)	=	5.5kg

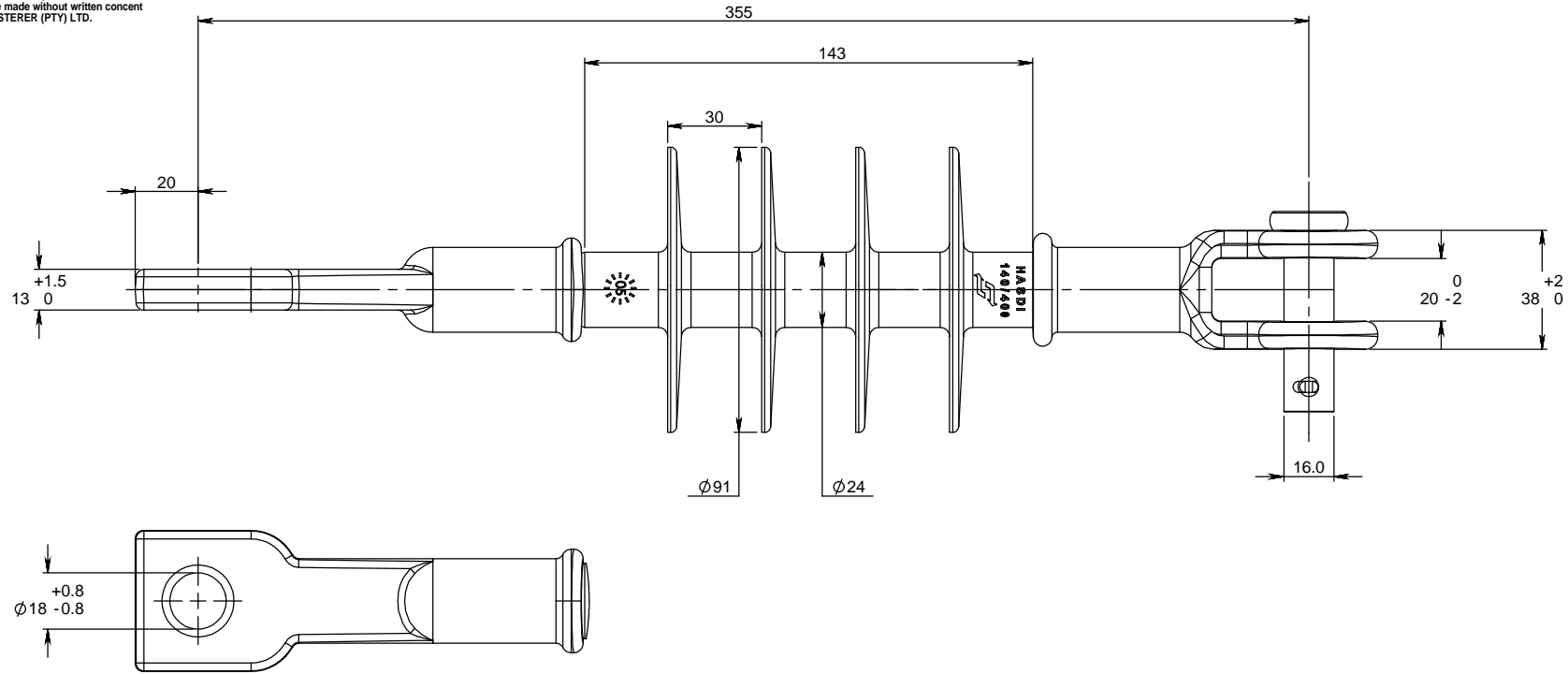
Square Tongue / Clevis End Fitting in acc. to Drawing BBB0430

SML in acc. to IEC 61109

Galvanizing (h.d.g.) acc. to EN ISO 1461

Description Compression - Tension insulator Round Clevis / Square Tongue 54 03 2577	Unspecified Tolerances 0, ±1 0,0 ±0.25 0,00 ±0.1 Angles ±1°		Weight kg		Substitute for	
	Drawn By		23/05/2007		R.N	
	Checked By		23/05/2007		ALJ	
			Approved By			
	Material				Revision 000	
PFISTERER (PTY) LTD		Scale N.T.S.		Drawing/Part Number 144 034-027		

This drawing and its contents are confidential and exclusive property of PFISTERER (PTY) LTD. No publications, copies or distribution may be made without written consent by PFISTERER (PTY) LTD.



Technical Data

One minute power frequency withstand voltage, 50Hz, wet	=	55 kV
Lightning impulse withstand voltage, 1,2/50, pos.	=	143 kV
Arcing distance	=	170 mm
Minimum creepage distance	=	400 mm
Specified mechanical load (SML)	=	70 kN
Routine test load (RTL)	=	55 kN
Number of sheds	=	4
Material of fittings	=	Steel, h.d.g.
Weight (approx.)	=	1.3 kg

Clevis / SquareTongue in acc. to BBO 0281

SML and RTL are in acc. to IEC 61109

Galvanizing (h.d.g.) acc. to EN ISO 1461

Description	Unspecified Tolerances	Weight	Substitute for	
Silicone Insulator HASDI 140/400 c/w clevis & Railway square tongue - straight. (54/16897)	0, ±1	kg	Drawn By	05/07 T.M
	0,0 ±0.25		Checked By	05/07 ALJ
	0,00 ±0.1		Approved By	
	Angles ±1°		Revision	
Material				
Scale		Drawing/Part Number		
PFISTERER (PTY) LTD		N.T.S.	54/16897	